

Notice of ground investigation works

July 2019 | www.hs2.org.uk

High Speed Two (HS2) is the new high speed railway for Britain. Eiffage Kier are one of the contractors carrying out the civil engineering works for the new HS2 line and will undertake earthworks and landscaping in this area, as well as creating new structures such as bridges, viaducts and green tunnels.

What are we doing?

We will be carrying out ground investigations along the route to obtain information about the ground conditions where the railway will be built. These ground investigation surveys will complement our existing knowledge and help guide the construction of the railway. We need to drill small holes into the ground, known as boreholes, to extract samples of the soil for testing. We will do this using drilling rigs which are small enough to be towed by a typical off-road vehicle.

When will these works take place?

These works will take place between August and October 2019. We do not expect to be in the same location longer than two weeks.

How will this affect me?

The works will be carried out by teams of three or four people and all investigation locations will be safely reinstated. We will use standard ground investigation techniques for the surveys. On the next page we have a picture of what a typical drilling rig may look like.

Works at any one location will generally not exceed two weeks and we do not expect any impact on highways however neighbours near to work sites may hear the drilling and notice general site activity but this will be kept to a minimum as much as possible.

There will be a small number of vehicles and trailers moving to and from site. We will be closely monitoring the roads around each activity and will take actions to keep your roads clean.

If you have a question about HS2 or our works, please contact our HS2 Helpdesk team on 08081 434 434 or email hs2enquiries@hs2.org.uk

Notification



Duration of works

Normal working hours:

Monday to Friday

8.00am – 6.00pm

Saturdays

8.00am – 1.00pm

We may also be on site for one hour's start up and shutdown outside of these times.

What to expect

Varied activities with both quiet and busier periods. Agreed routes will be used by a small number of HGVs and vehicles. A lot of our equipment will be moved by local farm tractors and trailers.

What we will do

Manage any environmental impacts, such as traffic and noise.

Respond promptly to any complaints and take appropriate action.

Inform you of any changes to the dates we have given you.

Take care to respect your community and the environment.

Notice of ground investigation works

Notification



www.hs2.org.uk

What does the work involve?

We will be using a mixture of survey techniques, ranging from using ground radar to drilling boreholes in the ground to take soil and rock samples. A typical borehole has a diameter of 200mm and can vary in depth from between around 10 metres and 50 metres. Small pits known as trial pits will also be excavated. These tend to be about 4 metres long, less than a metre wide and up to 4 metres deep. After all work, we will reinstate the ground back to the condition it was in before the survey.

The photograph below shows a typical borehole drilling rig.

For more information about HS2 Ground Investigations, please go to:

<https://www.youtube.com/watch?v=l8pCfamzccM>



Contact our HS2 Helpdesk team on **08081 434 434**

Notice of ground investigation works

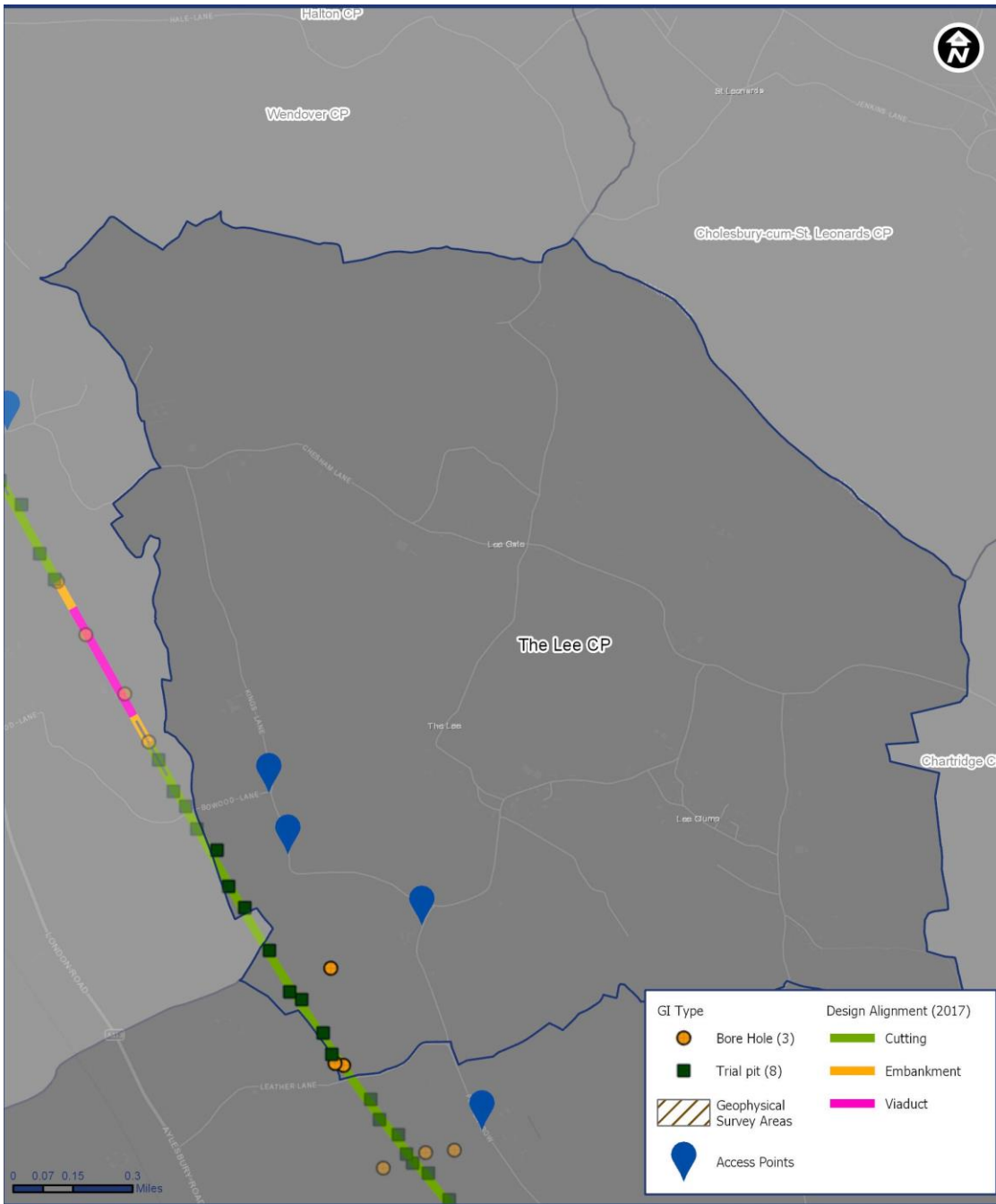
Notification



www.hs2.org.uk

Where is the work taking place?

The map below illustrates the area within your local parish where we will be carrying out these works. The access point for the works in your parish will be from Kings Lane or Chesham Lane.



Contact our HS2 Helpdesk team on **08081 434 434**

Keeping you informed

We are committed to keeping you informed about work on HS2. This includes ensuring you know what to expect and when to expect it, as well as how we can help.

Residents' Charter and Commissioner

The Residents' Charter is our promise to communicate as clearly as we possibly can with people who live along or near the HS2 route.

www.gov.uk/government/publications/hs2-residents-charter

We also have an independent Residents' Commissioner whose job is to make sure we keep to the promises we make in the Charter and to keep it under constant review. Find reports at:

www.gov.uk/government/collections/hs2-ltd-residents-commissioner

You can contact the Commissioner at: residentscommissioner@hs2.org.uk

Construction Commissioner

The Construction Commissioner's role is to mediate and monitor the way in which HS2 Ltd manages and responds to construction complaints. You can contact the Construction Commissioner by emailing: complaints@hs2-cc.org.uk

Property and compensation

You can find out all about HS2 and properties along the line of route by visiting:

www.gov.uk/government/collections/hs2-property

Find out if you're eligible for compensation at:

www.gov.uk/claim-compensation-if-affected-by-hs2

Holding us to account

If you are unhappy for any reason you can make a complaint by contacting our HS2 Helpdesk team. For more details on our complaints process, please visit our website:

www.hs2.org.uk/how-to-complain

Contact Us

Contact our HS2 Helpdesk team all day, every day of the year on:

 Freephone **08081 434 434**

 Minicom **08081 456 472**

 Email **hs2enquiries@hs2.org.uk**

Write to:

FREEPOST

HS2 Community Engagement

Website **www.hs2.org.uk**

To keep up to date with what is happening in your local area, visit: **www.hs2inyourarea.co.uk**

Please contact us if you'd like a free copy of this document in large print, Braille, audio or easy read. You can also contact us for help and information in a different language.

HS2 Ltd is committed to protecting personal information. If you wish to know more about how we use your personal information please see our Privacy Notice <https://www.gov.uk/government/publications/high-speed-two-ltd-privacy-notice>

Reference number: 1MC06-CEK-IN-NTE-C002-000004

High Speed Two (HS2) Limited, registered in England and Wales.

Registered office: Two Snowhill, Snow Hill Queensway, Birmingham B4 6GA.

Company registration number: 06791686. VAT registration number: 181 4312 30.