



NEWSLETTER

For The Lee, Lee Common, Hunts Green, Kings Ash and Swan Bottom

Barnaby Usborne MBE

By the Newsletter Team

We were all hugely saddened by the news of Barnaby's sudden death in March and know that there will be many who will want to reflect and pay tribute to him. Barnaby served The Lee Newsletter for nearly 20 years and, at the Newsletter Dinner in December 2015, we reflected on his contribution to The Lee in presenting him with the Newsletter Award.

"The Award this year goes to someone who has made regular contributions to the Newsletter over its entire life, offering his thoughts on a wide range of subjects. However, the Award this year reflects, not just what he has contributed in words and deeds to the Newsletter, but also the contributions he has made to the community as a whole. Because he is in many ways The Lee's man-for-all-seasons.

"He embodies the very essence of what the word 'community' is all about – it's about doing things not primarily for the benefit or enjoyment that you gain yourself from the activity but for the benefit and enjoyment that others gain. His list of community-driven activities is endless: it includes former Parish Council Chairman, Chairman

of the village Shop Committee, Quarter-master general for the Chiltern Society footpath volunteers (out this morning erecting a new gate), leader of the CRAG tunnelling group, member of the Parish Hall Committee, 'distribution supremo' for the Newsletter... and the man-up-the-ladder putting the guy on top of the village bonfire.

"Ladies and gentlemen, it gives us the greatest possible pleasure to announce on your behalf that the Newsletter Award goes to our extremely active 'man-for-all-seasons'... Mr Barnaby Usborne."

We all miss him dearly and send our best wishes to his family.

From the Editor

By Jonathan Batten

A footnote this month as I run out of pages – an edition with a mix of some sadness and a bit of tom foolery – I hope we got it about right.

A Happy Easter weekend to all our readers – spring is on its way, get in line for your first or second jab and follow the yellow brick road map...

Please send your contributions for next month's edition, including tributes to Barnaby, to the editor, Phil Harrison, by 12th April, at theleeneewsletter@gmail.com

Your letters

Dogs

To the Editor



As I walk round our beautiful countryside, I am astonished by the careless disregard being shown by some dog owners.

The owners I am singling out are the strange breed who go to the effort of bagging their dog's poo but then hang it from a nearby branch, tuck it in the base of a hedge, or simply throw it away. Why? What do they think is going to happen to it?

The Parish Council doesn't employ 'poo bag fairies' to the best of my knowledge.

Bag it and bin it – at home.

Phil Harrison
Lee Common

Litter

To the Editor

Travelling to the vet's in Aylesbury via Kings Ash a few weeks ago, I



saw a young family picking litter from the verge.

Returning an hour later, they were still there, but on the other side of the road, and their black bin bag was full. I stopped to thank them and lament the need for their public-spirited gesture.

I often litter pick on my dog walks and it's depressing that the same items are there again the next day. A tally shows Red Bull cans and Costa Coffee cups as the most discarded items on my walk, followed by cider and beer cans and of course, the ubiquitous McDonald's containers!

Trish Swain
Chartridge

[The litter pickers of the village were out in full force during the week commencing 21st March clearing other people's rubbish from the road sides and verges – the items Trish mentions featured prominently. Ed]

Love can keep us together

By Diana Taylor

Frontline workers, along with members of programmes that entertain us and so many others we don't even know about, have left their own homes and families to care for us. They have not had any choice but to continue in dangerous work and work that deprives them of their normal life.

Having offspring working in health care, I have heard, with daily frequency, about the deaths they have witnessed. Deaths which may not have occurred so early had it not been for something minute, silent and invidious... the Covid-19 foe which has invaded us. I have also just heard that my 19-year old, athletic granddaughter has succumbed to this virus. Proof that, like war, infection has no more respect for the young than for anyone else and that the battle against it frequently recruits the young.

Reading some of the 'War Poems' one may find imagery that is surprisingly pertinent to the situation in which people find themselves now. Our modern-day fighters are similarly tired. They are aware of their enemy and see its victims, young and old alike, all around them. They often see their friends fall.

The front line

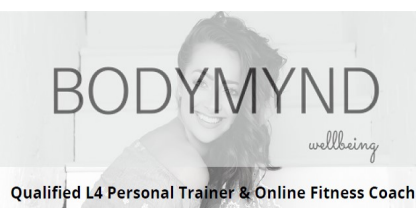
As these 'soldiers' carry out the work they are commissioned to do, they face death as surely as if it were some iron weapon in front of them. They cannot run away. Many are in uniform and, on occasions, they miss their meals, sleep and comfort breaks because they are at an intense point in

the battle to protect our citizens and to preserve the life of our nation.

It was fine weather when we clapped for these 'heroes' on Thursday evenings. It was fun to see neighbours for a short while and gratifying to feel that we were saying "Thank you". Now, we are all tired. We are all lonely. Whilst some of our villagers remain active soldiers, most of us have become onlookers in the fight and the war still has a long way to go.

How shall we avoid depression? Well, let us look at how people coped in wartime.

They had no idea at all when, if and how the situation would end. In the meantime, on rations, they ate properly. They used resources sparingly, they made up songs and poems and developed other hobbies and handicrafts, many of which were useful. They chatted and laughed and



BODYMYND
wellbeing

Qualified L4 Personal Trainer & Online Fitness Coach

"The groundwork of all happiness is good health"

At BODYMYND Chloe takes a holistic approach, delving into not only your physical health but also your mindset, sleep, nutrition and mental wellbeing.

Online Coaching and
Personal Training
Contact Chloe to start your
journey today

bodymyndwellbeing@gmail.com
www.bodymynd.co.uk

grew things and they sheltered themselves whenever they knew of impending danger.

We can be heroes

We, in 2021, can do all of these things. We can ‘bother’ to make something enjoyable to eat, even if we are alone. We have the Shop and can get good ingredients. We can also use our resources sparingly and be mindful of the effort and cost it takes for us to be supplied with, for example, our utilities. We can make up songs and poems and use our beloved Newsletter to share these. We can also share recipes and ideas with others. After all, anyone who saw Grayson Perry encouraging everyone to paint must, by now, know that it is ok just to “have a go”.

Chatting is easy, thanks to modern communications and it is always such a joy when a friend gets in touch and simply says “How are you coping?” We also have the Forum, and this is a marvellous place in which to air views, express ideas or give thanks for our wonderful village life.

We can grow things. Even a small bowl of mustard and cress or a few seedlings to bring on later will give immense pleasure and pride. Seeds can be shared as can news of how any new ‘green fingers’ are getting on.

Gimme shelter

Without an Anderson shelter, we can protect ourselves from impending danger. Every day, the sirens are screaming out the warnings to us. They tell us what to do and how to do it. We do not know better than government and scientific warnings, guidelines, laws and advice. So, we must shelter ourselves and live until the war is over, until we are all free and can all have fun again. ‘Fun’ will

be more naturally rekindled if we all stay in touch now.

And in the meantime, let’s send up a shot of positivity to the heroes. We could say a prayer or spend a couple of minutes in quiet thought for them. We can toast them when we have a drink, or we can simply say “Thank you” when we get into bed. In my mind there is strength in collective positivity and grace in gratitude. We have so much evidence of this in our kind community and all we have to do is send it out to those who are fighting for us.

Shop around

By Symeon Economou

I’m pleased to report that many of our volunteers are slowly coming out of hibernation and we are girding our loins for an extension of our opening hours.

As a first step we are pleased to announce that we will be extending the opening time until 4:00 pm on weekdays from 12th April. Our full opening hours will then be:

Monday-Friday: 8:00 am - 4:00 pm

Saturday-Sunday: 8:00 am - 12:00 noon

The new chiller has allowed us to explore new products, so keep an eye out for them as we trial tentative quantities. As well as a bigger range of fruit and vegetables we have seen Sicilian cannoli and Arancini, freshly made by local Sicilians.

We are delighted that Chris Field will be supplying flowers for Easter weekend. We are also planning to respond to the loosening of Covid restrictions with a mammoth (not just) Greek food event on bank holiday Monday, 31st May. So, unless Boris is forced to change things, watch this space.

The Lee Parish Council update

By Hayley Farrelly, Clerk

Parish Council election

The period for nominations for election to the Parish Council will close at 4:00 pm on Thursday 8th April. Following this deadline, a full statement of persons nominated will be published. A few reminders for nominees:

- Nomination forms are available from the Electoral Commission at www.electoralcommission.org.uk/ Hard copies are also available from me at clerk@thelee.org.uk
- Forms must be hand-delivered (not emailed or posted) on working days between 10:00 am and 4:00 pm to the Chiltern and South Bucks election Areas, King George V House, King George V Road, Amersham, HP6 5AW.
- If you have any questions or queries relating to the Parish Council election please contact me at clerk@thelee.org.uk or the area Deputy Returning Officer on 01494 732143 or 729000 or email elections@buckinghamshire.gov.uk

Planning procedures

The Parish Council has recently reviewed the way it handles planning applications within the parish: the updated procedures can be found on The Lee website.

We will continue to post notices, as we receive them, of all applications within the parish onto The Lee Forum and will remind residents that if they have specific comments to make, then they should respond directly to the planning authority. If a resident wishes to make planning-related comments to

Quality Building & Renovation Projects

Based locally, PVE Construction are well known for providing high quality work throughout the Chilterns and surrounding areas.

We specialise in both residential and commercial projects offering a wide range of services from individual home improvements to complete new build management.

Call Phil Easeman on **07771 863880** or visit www.pveconstruction.co.uk



Professional Reliable Trusted

SHORT-TERM RENTALS

From £295 per week (all inclusive)

Self-catering holiday or temporary accommodation at Lee Common

Moving house?

Completion dates don't coincide?
House sale falls through?
Builders outstaying their welcome?

Expecting Visitors?

Need extra accommodation?

*Self-contained Period Property:
sleeps four guests*

Tel: 01494 837798

e-mail: lowerbassibones@yahoo.co.uk

the Parish Council, they should direct them to me at clerk@thelee.org.uk. Such comments will be taken into consideration by the Parish Council when forming its own view and will be unattributed.

Parking in Oxford Street



Inside the playground / allotment area (on the right-hand side as you enter from the Oxford Street main gate: see below) there is an area of land which has not been cultivated for many years. In view of the continuing parking and traffic problems in the Oxford Street area (see above), the Parish Council has been discussing



recently whether or not it would be a good idea to open up this spare area for parking.

There would be many issues to be resolved before a final decision could be taken, not the least of which would be funding, planning, covenant and highways issues. However, we are keen at this stage to receive feedback from residents as to whether this idea is worth pursuing and, if so, how it should be developed?

Here are some of the questions that would need answering:

- Who would be permitted to park there? Allotment holders? Playground users? Residents? School drop-off/pick-up? Visitors?
- How would it be controlled?
- Would it be open 24/7?
- Would we use the existing gated entrance for entry and/or open-up a new access farther along for exit?
- How many parking spaces should be planned?
- How should the layout be planned?
- What sort of surface needs to be put down?
- How do we protect the footpath, allotments, neighbours and the playground from vehicular traffic?

If you have any comments on the idea in principle or in detail, please email me at clerk@thelee.org.uk or send a reply to PO Box 933, Great Missenden, Bucks HP16 6BU.

Bucks Council green bins

Finally, a reminder that green waste will be collected regularly from your doorstep by Bucks Council – so please don't fly-tip in the hedge!

Furthermore, there is no limit as to how many green bins you can have.

Full details on the service and costs can be found at: www.chiltern.gov.uk/gardenwasteservice

Learning from lockdown



By Claire Gresswell, Headteacher
Lee Common School

What a joy to have all the children back in the building! Despite our small numbers, the building has felt surprisingly crowded and noisy this last week as we all adjust, yet again, to the wider opening of the school.

There is a great deal of talk in the media about how behind our children will be, how adversely affected their life chances and what schools and teachers should be doing to plug these worrying gaps. I worry about the impact of this pandemic on our children, of course, but I worry more about the impact of this very loud and negative narrative.

As primary practitioners, we know that the child who frequently hears that they can't draw, that they struggle with maths or find it hard to make friends, will very soon start to believe that narrative. If we continue to tell our children they are behind, what hope are we giving them for their future? It will become a self-fulfilling prophecy.

We know that chunks of the curriculum have been missed and certain behaviours for learning will need to be revisited. But we also know that a great deal of learning has taken place during lockdown in many different ways. Some children have learned new skills such as playing the piano or joining their handwriting. Others have made huge strides in their reading and many have acquired a

great deal of knowledge about the natural world. All children have learned how busy their parents are when they are at school!

And it's not just the children who learned in lockdown. At a moment's notice, teachers re-planned and reworked their lessons and prepared to present themselves and their teaching via a screen. It wasn't always perfect, especially when technical glitches got in the way and our nerves tripped us up, but we took a deep breath, cast aside our anxieties and honed our skills alongside the children. We learned a lot about ourselves and our teaching practice.

Our home-learners taught us that 15 focussed minutes on a clearly-defined and targeted learning objective can be as effective as the 50 minute three-part lesson in the classroom. They taught us that when you are four or five years old



KINGSHILL

CARS FOR ALL OCCASIONS



CHILTERN

AIRPORTS



LONDON

01494 868699

Email: bookings@kingshillcars.co.uk

it is really hard to sit still and listen to a grown up, even for just 10 minutes, without getting distracted or needing to move. They taught us that when you are six, the opportunity to tell your teacher and your friends about something you have seen or heard or done is much more important than counting back to subtract on a number line. To be given a voice and to be heard matters a great deal.

School days (ring ring goes the bell)

Our key-worker children in the bubble taught us not to fear mixed-age teaching. They showed us how older children can extend and consolidate their understanding by sharing knowledge and skills with younger peers. The older ones rose to their more mature status and took pride in being more responsible, better behaved young leaders. Teaching the bubble proved to us that that younger pupils learn quickly from older classmates; they watch and listen. They observe skills to aspire to and hear a wider, more mature vocabulary to mimic. We also learned that collaborative planning on a whole-school topic is a more creative, more enjoyable and more efficient way to prepare lessons for our children. Our practice has changed... for the better.

THE LEEWAY – YOUR VILLAGE SUPPORT TEAM

If you have difficulty getting to your doctor or the hospital, doing your shopping or would like a home visit and a friendly chat, then please ring:

07845 029500

Mon - Fri: 10 am - 4 pm. Sat: 10 am - 12 noon. Please give us reasonable notice of your requirement to help us organise it.

So, this pandemic has hit hard. Its effects will be felt by many for many years. But I believe there is still cause for optimism in school. And yes, our children do need to catch up. They need to catch up on all the missed playdates, birthday parties and family gatherings. They need to catch up and reconnect with their friends, process their experiences and soothe their anxieties. Then they can catch up with the curriculum. And catch up they will.

Artificial black hole to further reduce HS2 journey times

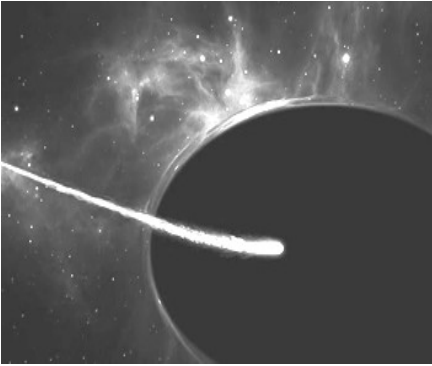
By David Spain

A spokesperson for the HS2 project today revealed that the organisation will be utilising artificial black hole technology in order to save time on rail journeys.

Speaking to the media, Press Officer Tom Barrett explained that the use of an artificially constructed black hole that could bridge two points in spacetime would: “Offer real, measurable improvements in terms of commute time”.

“Current thinking dictates that the shortest distance between two points, for example London and Birmingham, is a straight line,” Barrett told the press, “what we’ve not considered in terms of rail travel is, in layman’s terms, bending space in order to bring those two points closer together.”

Several questions have been raised about the safety issues involved in creating a black hole for a train to pass



through, and the issue has even been debated in the House of Commons. Prime Minister Boris Johnson, however, referred to the concerns as “pointless fearmongering”.

“The British people are a nation of bold rail travellers,” Johnson announced at this week’s PMQs, “and to suggest that the prospect, the exceedingly unlikely prospect, of, to use a hypothetical example: damage to luggage or accidentally being transported into an unending and nightmarish hellscape, would turn them from their rightful prerogative to use these trains is not simply divisive, but beyond the pale”.



[With thanks to Newcastle University student’s newspaper The Toon Lampoon for permission to reproduce this article on 1st April.]

The Lee cricket

By Patrick Walsh

After what seems to have been the longest ever winter, The Lee Cricket Club is looking forward to an exciting summer of cricket ahead.

We managed to play through the second half of last season, albeit with some new restrictions in place around social distancing and frequent hand sanitising during the game. We are anticipating that the game will be allowed to proceed this summer with similar guidelines in place, and we have been busy getting all the fixtures set up and starting to prepare the ground.

We will have adult league games every Saturday from early May to early September, and Sunday friendlies every week too. Our colts



NICHOLAS JOHN

**Your local property services company
for internal and external works**

- * City and Guilds qualified
Multi-Skilled Tradesman
- * Forty-five years’ experience
- * Fully insured for your protection
- * References supplied on request

Find out more at:

www.instagram.com/nicholasjohnbatty

Mobile: 07841 395867

Home: 01494 863275

nbatty@btinternet.com



section remains as vibrant as ever, and this year we will have fixtures for children in every age group from Under 9s (those currently in school year 4) through to the Under 14s (school year 9). Our colts train at the club every Saturday morning during the season.

Milo Kanga

Every Friday evening in the season we have Kwik Cricket (aka Milo Kanga) training for younger children (in school years 1 through to 6). This is fun, soft ball cricket designed to introduce kids to the game, develop basic skills and start to enjoy team participation. Friday evenings are family events, where we encourage members to enjoy our (socially distanced) bar and barbecue whilst watching the kids play their games.

The Lee CC is very much a family-oriented club and is always open to



new members of all ages and abilities. If you or your children are interested in playing, coaching, umpiring, scoring or simply being a social member, please contact Patrick Walsh, club chairman, on 07887 736205 – or come along on a Friday evening or to a match and see for yourself.

Bridgerton?

By Judy Hart et al

Sometimes part-games are as difficult to bid and play as game or slam hands. This recent deal was an example of this.

♠ 10 9 4 3

♥ K Q 9 5

♦ A 8 7

♣ 8 4

♠ Q 2

♥ A 10 8

♦ K Q 10 9 3

♣ A J 10

♠ J 6

♥ 4 3 2

♦ 6 4

♣ K Q 7 6 3 2

♠ A K 8 7 5

♥ J 7 6

♦ J 5 2

♣ 9 5

Dealer: West
Vulnerability: Both

Pippa Hart Photography



Natural & Informal
Black & White
Portraits

01494 837340
www.pippahart.com

The bidding started:

W N E S
 1♦ pass ?

Where do you think the bidding ended and did it make? See page 17.

Zoom in the room

By Diana Taylor

Have you tidied up your bookshelves
 since you first appeared on Zoom
 Have you titivated, dusted and
 sanitised your room
 Have you even put a pot of flowers
 upon your head height shelf
 In the hope that they'll enhance you
 and improve the look of self?

It was okay when just telephones
 allowed us to run capers
 Now our callers can identify that
 scruffy pile of papers
 It can cause a bit of worry that, every
 time you speak
 Folk can see you haven't dusted for
 much more than a week.

I guess real friends just don't mind
 when our imperfections show
 But those smart folk who 'arrange a
 meet', the ones we barely know
 Make us feel that we might need to
 be more erudite and wise
 And prompt a day of action to clean
 and organise.

Now, I've done it and created quite a
 library sort of scene
 Philosophy and Science books array
 my shelves, now clean

But, what to do with other stuff
 turfed out in disarray
 Well, that clutter's in a dusty place,
 to clear another day.

Woe is me, I've just discovered you
 can buy a drop down view
 To cover up your bookshelves and
 disguise the mess that's true
 It can set the scene in Venice, in
 Oxford or in Rome
 And belie the leaning volumes in
 your comfy, scruffy home.

But for me that's just a cover up that
 shoves issues to the side
 And denies cathartic moments of
 bibliographic pride
 For I've titivated, tidied and sanitised
 my room
 And I'm ready now and waiting if
 anyone cares to zoom.



Swan Bottom based glazing
 company specialising in
 Replacement UPVC Double
 Glazed Units

Repairs to UPVC Windows & Doors
 (hinges, handles, draught seals,
 jammed sashes)
 Splashbacks/Mirrors
 Glazing Repairs

**24/7 Emergency 'Board-Up'
 Call Out Service**

Tel: Macauley Hearn 01494 919015

Mob: 0788978695

E: Macauley@contractaglaze.co.uk

HS2 update

By Cllr Colin Sully

On 1st March, The Lee Parish Council ran a Zoom meeting, outlining the impacts of HS2 work on the parish in the coming months. The slides used in the presentations are at www.thelee.org.uk/hs2-in-the-lee

The scale of HS2 activity in the immediate area has increased significantly in recent weeks. Whilst our main concerns continue to be traffic-related, the Parish Council has also been seeking to further mitigate the impact on the local environment.

Leather Lane

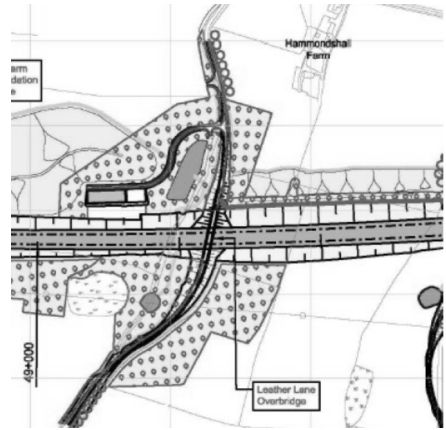
The work at Leather Lane is having a significant impact on the AONB. Eventually this work will include:

- re-routing a section of the lane
- a road bridge over the HS2 line
- embankments adjacent to the line, to support the road and the railway, and to provide noise protection to surrounding areas
- a permanent access for equipment maintenance east of the overbridge
- landscaping and tree-planting
- a temporary crossing at one of the re-routing points.

There will not now be a works compound at the top of Leather Lane; the works will instead be served from the main compound to the south.

The extent of the proposed tree-felling on Leather Lane has been challenged by the local parish councils, by the Chiltern Conservation Board, by Bucks Council, by our local MP, by many local residents and by visiting protesters.

At meetings in mid-March, EKFB (the main works contractor) gave assurances that they were “reviewing all reasonably practical” steps to minimise the number of trees to be



The HS2 plan for Leather Lane

felled and gave assurances that they would not fell any trees for temporary works. As a result of this review, EKFB reported that:

- 40% of the affected trees would need to be felled to build the railway and permanent works
- 30% could be left in place
- the remaining 30% would be further reviewed, in the context of the design of the earthworks, drainage, ecology and tree-planting.

The parish councils expressed a strong wish that all of this remaining 30% should also be reprieved, if necessary by changing some of the design constraints and by integrating the oaks into the future tree-planting programme. This more detailed review was due to be completed in late March. It is hoped that over 50% of the trees in the affected section may yet be saved.

On 15th March, Leather Lane was closed, for a minimum period of three weeks, to enable ecology inspections and to start the felling of trees directly on the line-of-route and at the ends of the lane realignment. A significant local presence turned out to witness this sad event and there was local and regional media coverage.

Road and footpath closures

As construction work progresses along the line of route between South Heath and Rocky Lane, roads and footpaths which cross the line will be subject to temporary closures and diversions. Our current understanding is:

- GMI/13/3 and GMI/12 (running west from Potter Row) – closed until 2025/26
- GMI/2 (running west from Potter Row) – remains open with diversions
- Leather Lane – temporary closures only, including (as a minimum) 15th March to 29th March 2021
- TLE/2 (opposite Rushmere Wood) – closed April 2021 to Autumn 2026
- Bowood Lane – temporary closure for three weeks during April / May 2021; also closed for approx. one year (dates to be confirmed)
- TLE/3 (Bowood Lane) – remains open with diversions as a footpath
- TLE/5 (through Strawberry Hill Farm) – closed May 2021 to 2026
- TLE/6 and TLE/9 (West of Kings Lane) and WEN/36, WEN/39 and WEN/40 – closed May 2021 to 2026
- Rocky Lane – temporary closures only, including for three weeks in April / May 2021.

The periods of temporary closure of Rocky Lane, Bowood Lane and Leather Lane will not overlap. After May 2021, the only public footpath crossing the line between Leather Lane and Rocky Lane will be TLE3 (Bowood Lane), which will be signed at both ends to link-up with the Chiltern Way. The Parish Council has requested warning signs on footpaths in advance of the closures and diversions, especially on the long-distance paths.

A355/A413 traffic

The parish council, with others, have been pressing recently for further assessment of the impact of changes in

construction traffic on the A413 and for the consideration of additional mitigation. Bucks Council (BC) shared this concern and in March refused to approve the construction routes for HS2 work in the A413 corridor. HS2 Ltd has appealed to the Secretary of State, who may now over-turn BC's refusal, or he may refer it to a Planning Inspector. In the meantime, HS2's HGV traffic on the A413 is restricted and the project may be further delayed.

HS2 engagement

The Lee parish councillors meet every fortnight (online) with the main works contractors' community engagement managers. If you have questions or information you would like us to put to them, then please let us know at hs2@thelee.org.uk

Public engagement events are also being planned by the contractors for later in the year.



Domestic & Commercial Electricians

For all your electrical needs

- ✓ Fault Finding & Repair
- ✓ Testing & Maintenance
- ✓ Extra Sockets & Lights
- ✓ Vehicle Charging Points
- ✓ Periodic Condition Reports

Fully qualified & insured

Call - 01628 522888
electrical@bpsltd.co.uk



Services for April

At the time of going to press, the plans for services remain subject to Government guidelines.

St John the Baptist, The Lee

The service of welcome for the Revd Chris Haywood, when he will become Vicar here at The Lee, and Rector of the Hilltop churches, will take place on Thursday 29th April at 7:30 pm.

Because of the restrictions this service will take place via Zoom, but it will be a great celebration for us and everyone is invited to zoom in and join the service. The Zoom link will be circulated widely nearer the time, so please do make sure you get hold of it.

Everyone is encouraged to take this opportunity to welcome Chris and Georgie into our community and get his ministry off to a flying start!

From the Vicarage

By Revd Chris Haywood

As the date of my installation and induction approaches, my wife, Georgie, and I are very much looking forward to moving into the Vicarage, settling in the community and starting ministry across the benefices. The induction and installation service will necessarily be a Zoom affair, which I hope many of you will be able to join.

I understand the parishes are currently working towards reopening the churches, but will most likely not be in a position to resume public worship until May. We eagerly anticipate the resumption of services as soon as it is safe to do so. We do

hope many from the community will join us for our first services back, when worship recommences, and on an ongoing basis. We hope these will be joyous community and church occasions.

Of course it is a sadness for Georgie and me that the induction will not be a public service at St. John the Baptist Church, The Lee, as the Church holds a very special place in our hearts. Georgie and I were married at The Lee on 13th April 2002 by the Revd David Burgess and we had hoped to have another memorable occasion in the Church. I am however eagerly anticipating leading worship for the first time in the Church and we are delighted that we will be able to worship God together in a place which holds so many memories for us.

Leading worship in all the Hilltop churches will be no less special for me, perhaps especially at St Mary's, Hawridge, where Georgie worshipped as a teenager. She looks forward to reconnecting to the church members who first guided her in her formative experience of the Church of England.

It is our hope and prayer that every service in the churches across the benefices, will be a special occasion, where each and every one of us encounter God and the abundance of his love that we especially celebrate in a wedding ceremony.

Contacts: *Parish Administrator:* Joanne Evans (07811 094416). *Churchwardens:* Trevor Pearce (01494 837601) and Mike Sherratt (07597 158269). *Vergers:* Bill Pearce. *Treasurer:* David Stephenson (01494 867617).

Lee Common Methodist

4th 3:00_{pm} HC Revd Nigel Wright
18th 3:00_{pm} Revd Nigel Wright

We are delighted that services are now commencing but they will be conducted in accordance with government guidelines.

Contacts: Gerald and Marian Tomkins (01494 837479).

St. Mary's, Ballinger

St. Mary's Church is still open all the time but for private prayer only. Please sanitise your hands on entering and again when leaving using the bottles provided near the door. Please observe social distancing in accordance with government guidelines.

We would also ask all visitors to sign in on the sheet in the porch and not to go into the church if feeling unwell. Chairs have been set out in the main body of the church. All other areas are either covered or closed off.

Contacts: *Associate Churchwardens:* Anne Ellis (01494 837247) and Maggi Cameron (01494 864790) or maggi.cameron@hotmail.co.uk

Lucy Coppin – a life lived

By Valerie Edwards

Lucy and Les Coppin moved to Ballinger in 1981 and Lucy soon immersed herself in village life. She attended Harrow Grammar School for Girls and went on to graduate from Regent Street Polytechnic. Lucy had a varied career starting at the Medical Research Council and from there to University College London Anatomy Department. Following this she went to Glaxo and assisted in the SALK vaccine but

couldn't take part in the trials as she was allergic to eggs!

Not one to be standing still she trained as a dental nurse and eventually became the Practice Manager. Following this she became a NHS volunteer only ending 35 years' service last year due to lockdown. She specialised in skin camouflage as a practitioner, running clinics in Milton Keynes and Amersham hospitals, and a large GP practice in Aylesbury.

As well as this, she was coordinator for Bucks Red Cross Therapeutic Care Team, group convener for the local WIs for 20 years, past president of Ballinger WI, chairman of Ballinger Arts Society and Ballinger Hall Committee.

In her spare time, she was external examiner for various parish councils and churches. As you can see, Lucy will be sorely missed by everyone.

Cromar Carpets Ltd

**CARPETS, VINYL AND
WOOD FLOORING
SUPPLIED AND FITTED**

**9-11 STATION APPROACH
GREAT MISSENDEN
01494 862125**

----- *Advertorial* -----

Have you been conscious about your health and fitness during the pandemic?

Fitness, Nutrition and Mindset are all interlinked, and at BodyMynd, I focus on a Holistic approach bringing all these aspects together.

Hi, I'm Chloe and I qualified as a Professional Dancer at the Northern Ballet School back in 2017. Throughout my three year training as a dancer, I discovered another passion: for health and fitness. Fast forward to today, I am a fully qualified Personal Trainer, Behaviour Change Coach and a Pre and Post Natal Coach. With over three years in the fitness industry I have worked with a range of clients, from the elderly through to athletes, anyone is welcome.

At BodyMynd our aim is to coach clients to help them achieve their health and fitness goals through a sustainable and enjoyable way, making their journey become a lifestyle.

"The groundwork of all happiness is good health"

Without health, life can't be lived. Through Online Coaching and Personal Training I can help you. Giving daily support, nutritional guidance, weekly check-ins and a personalised programme tailored towards your goal, you can find balance in your life through good health and happiness.

Start your journey today by getting in contact with Chloe.

bodymyndwellbeing@gmail.com
www.bodymynd.co.uk

Up on the roof

By Diana Taylor



Awaking this morning my tired husband said

"Be quick, down the garden, there's a fox on the shed"

I looked for myself as I sought further proof

And there on the shed lay a fox on the roof

Much more peculiar even than that
Snuggled beside him was somebody's cat
I wondered whatever the reason could be

But then I remembered that, here in
The Lee

Everyone's friendly and all like to chat
So there's nothing so odd when a fox
loves a cat.

The Lee Flower Show 2021

By Jonathan Batten

Thinking back to April 2019 we would have been ready for glorious spring sunshine to start the gardener's year.

You would have completed your pruning and perhaps thought about giving the grass a cut.

The Flower Show committee would have been well into the serious

stuff of organising the show – working on the schedules so that these would be ready for delivery to your doorsteps in early May.

For your part, dear reader, you would have been looking forward to forgetting about the battle with the winter weather conditions and getting ready to enter a variety of things grown, cooked, crafted, photographed and painted.

We have, of course, been in a different kind of battle for the last year which has stymied our plans for the show. The practicalities of running a Covid-safe show and the risks involved are too big to overcome so, sadly, The Lee Flower Show is not going to happen this year.

Hopefully we'll be back in 2022.

A walk on the wild side

By Judy Hart

As you may have seen if you have walked through the fields at the back of Kingswood House, Swan Bottom there has been a mass planting of trees and scrub.



The Woodland Trust contractor has spent a week planting up 12 acres of our land. Tim enlisted Nick Exley to

help him transport over three tons of stakes, bamboos and tree protectors out to the field from our house.

The Woodland Trust's contractor has a contract to maintain the trees for the next two years, so now we just have to wait and see if the wildlife comes to visit! The birds, butterflies and plant life will all be monitored so that the changes can be recorded.

I hope you can all enjoy watching things change with us, when you walk through the fields.

Ace of spades

In our game, East bid 1NT and West raised to 2NT, inviting East to game with maximum points. East passed and played in 2NT, which went one-off as N-S were able to make five spade tricks and the A♦.

HOME REARED MEATS,
LOCAL PRODUCE
& HOME COOKED FOOD



Free Home Delivery
Wednesday - Friday

Chequers Estate | HP17 0UT
SHOP Tues - Fri 10 - 6 & Sat - Sun 10 - 4

KITCHEN Fri - Sun 10 - 4

www.buckmoorendfarm.co.uk

Zero shades of grey

By Ken Mitchell-Gears

The felling of our beautiful oak trees by HS2 has stirred such emotion and support from the local community, with many providing much needed food and assistance to those on the front line, which has been wonderful to see.

Past generations of the Stewart-Liberty family designed and implemented many of the natural features that are an integral part of the village today: tree lined avenues and sprawling oaks standing guard over the pasture fields, many of which are now hundreds of years old. This commitment to our environment continues to this day, so that future generations may enjoy where we live.

Whilst most are now aware of the threat that HS2 poses to some of our grandest and oldest trees, many are not aware of a more insidious threat facing the next generation of oak and beech. Today's majestic trees owe much of their success to the absence of a more recently imported invasive species, which is sadly causing juvenile trees to die at an alarming rate – the grey squirrel.

Reducing our carbon footprint

We all know we need more trees, and the government is planning on planting some 74,000 acres of new woodlands every year starting from 2025, which will help to reduce our carbon footprint and provide habitat for insects and animals. However, these endeavours will be for nothing if these young trees fail to reach their fortieth birthdays, sabotaged as they



are by the grey squirrel, which strips their bark before they have a chance to mature.

The grey is also responsible for killing up to 30% of songbirds and displacing owls from their nesting sites so that they do not have a chance to breed.

Locally there is a year-round initiative underway to reduce the number of greys in the area and we are already seeing very little new tree damage and an increase in the number of owl sightings. The government is also working on its own solution and in three or four years there should be a contraceptive available to keep the numbers down. However, we can all do our part to help reduce the squirrel population, by using squirrel-proof bird feeders to limit their available food supply.

These endeavours are essential if we wish for future generations to enjoy the same beautiful, mature trees that we fight so hard to save from the current ravages of HS2.

Helping local wildlife

A further helping hand is being given to local wildlife in the form of the bird sanctuary and nature reserve, which has now been fenced off by the Stewart-Liberty family. New trees and hedging have been planted, along with various crops to feed the birds throughout the year. From December to the end of April, 100 kg of bird food is also distributed every week, ensuring the survival of birdlife throughout the harsh winters, whilst also attracting new species. There are many footpaths that go around this area so we can all enjoy a bit of bird spotting. Next year it is intended to introduce a beehive which will further complement the reserve.

So many people support our village, ranging from picking up litter to working in the shop, and it is this enthusiasm and willingness to help that makes The Lee such a unique and wonderful place to live, now and for future generations. I'm sure everyone will join me in thanking these individuals for all they do.

H2O update

By O'de Aitch Tulow

Many, many years ago I was sitting in church, unusually paying attention and listening to the sermon. Not bad for an eight year old. The vicar had begun with the question "What is the shape of water?" It has remained in my mind for over 60 years.

The sermon was all about one's soul and character. The use of the water question was to demonstrate that it was the shape of the vessel that dictated the shape of water and likewise the shape of our soul is

dictated by the shape of us, the person. Pretty powerful analogy to have lasted over 60 years. Can't say any other sermon had the same impact.

Staying on the subject of water, I recall the World War II film *The Heroes of Telemark*. It was about British commando teams and local Norwegian resistance destroying the German war effort to manufacture Heavy Water for their nuclear bomb programme.

This has led me to wonder about the strength of water. After all the strength of an alcoholic drink can vary considerably, as many a headache can attest.

As we take our daily walks, we have become more aware of our surroundings. We notice more. Only recently I was walking along Oxford Street in Lee Common and saw water bubbling up through the road surface outside Prospect Cottages. Wow I



Great Missenden Supported Living

A warm, friendly, house for the elderly, in the picturesque centre of the village.

Come and take a look to see for yourself and have a chat with Carol Lauder-Ross (Manager)

Tel: 01494 865026

or email for a brochure

info@abbeyfieldgreatmissenden.co.uk

Find out more on our website

www.abbeyfield.com

thought the water must be really strong to get through that layer of tarmac. Contacting Affinity Water to tell them about the water leak I asked why this may have occurred. I was advised that it was due to the fact they had increased the strength of the water by 9.3%.

This immediately explained why, when pouring my wife's whiskey and water she complained it was weaker than usual. It was due to the fact that the strength of our local water had been increased. Has anyone else noticed this?

School's out

By Trish Swain

At the time of writing, primary school pupils in England have been back at school for a week, with parents and children breathing a huge sigh of relief. It made me think of what a remarkable job my Mum did with four of her children in Malawi in the 1960s and 70s.

My Dad was Principal of the Forestry College, and we lived on a big estate comprising a campus, workshops and staff houses with a planted forest and indigenous trees all around. Our house was at an elevation of 6,000 feet in the foothills of a

mountain, with the rocky part directly behind us. The nearest small town was at least eight miles away, the road was unpaved and very tricky in the rainy season, and in any event Mum couldn't drive.

Home schooling or Correspondence School was the norm. The School was located in Rhodesia (now known as Zimbabwe), and every fortnight an A4 sized envelope arrived with two weeks' instructions for Mum. The School had teachers who checked over our work and made comments and suggestions; Mum admitted later that she always felt she was the one being assessed. She had a friend who actually did her children's work for them as they were never to be found on a school day...

By the time I was old enough for school aged about five, Mum had become a bit of a dab hand, as she'd taught my older brother and sister, by then at boarding school. Every school day was more or less the same, we worked on the dining room table after breakfast. I recall lots of hand writing practice in an exercise book with three lots of ruled lines to get the ascenders and descenders correctly located. Mum would form the first letter in red pencil and then I had to continue with an HB pencil. Erasers were not allowed!

As I got older, I had to write 'News' daily, which was hard when nothing really happened. Or there was the option of 'Memory', which put the onus on Mum to think up a sentence which I then had to recall and write down, I usually chose to do this. Memorably, when JFK was assassinated and the news filtered through, my sister wrote: "A bad cowboy killed the President". I don't remember learning to read, but I

Mike Lake

Friendly & Local

Painter & Decorator

For that professional touch

Interior & Exterior

Also Property Maintenance

For a free quotation please call:

01494 866873 / 07723 017005

mikelake42@talktalk.net

really didn't like the Janet and John books at all.

The three Rs

'Numbers' was also a daily task, I don't remember any practical maths at all, we just did sums. When Mum had to start teaching my younger brother, she also had a new-born



Bike-riding in Malawi

baby. I remember my brother using the newly introduced coloured Cuisenaire rods, which were a great way of demonstrating number bonds. Sometimes, she had to feed the baby and at that point she'd read to us. We had a Nature Table on our veranda, and that was the extent of any Science teaching. We did some Geography using a text book that was hideously outdated even then. At regular intervals, Mum would send us outside for five minutes running round the garden.

After lunch and the compulsory, and much hated, siesta we had to amuse ourselves in the afternoon, my Mum

had no idea where we were and we roamed the forests or rode our bikes.

Generally, there was no electricity during the day, but if the estate diesel generator was fired up, Mum would use her precious Kenwood Chef and we would bake during the morning, hoping that the temperamental wood fired stove wouldn't burn any cakes to a crisp.

At times, Mum had two children following different curricula at the same time; she had no formal training, no access to resources, no one to ask for advice if there was something we couldn't grasp all with the knowledge that the next envelope was on the way. I remember the ritual of sending our work off, the string in the back of the envelope being wound round the circular disc and then sealed with sealing wax.

Aged eight I went to boarding school which is another story...

J Brown Funeral Services

67 Woodside Road, Amersham, HP6 6AA
01494 727474 (24 hours)

A truly independent family funeral directors

Bespoke and traditional services
Private chapels of rest
Pre-paid funeral plans
Off street client parking
Home visits



Contact Jason Brown on: 01494 727474
jason@jbrownfuneralservices.co.uk



Recommended by
The Good Funeral Guide

Forum Freda

Useful information or unwanted noise?

Like many things it's all in the eye of the beholder – or in this case the recipient.

Many people really like the Wanted and For Sale section of the forum, whilst others just want to hear village news and not get bombarded with the minutiae of who is buying or selling what. Fortunately the forum is structured into different categories, so as anyone just browsing can choose those areas in which they are interested. It's also possible to restrict notifications to only those categories in which you are interested, take a look at www.thelee.org.uk/subscribing-to-a-forum/ for more details.

Here are some tips for keeping the forum a useful source of information, whilst avoiding it occasionally being perceived as a babble of noise.

Keep it private

All posts – both new topics and replies – are public, and the forum has no capacity for private messaging. Whether you are thanking someone for information, advising them that you have left them a message or sent them an email, telling them where and when to collect items they are buying or just expressing an interest in buying/selling something advertised, if you post to the forum your thoughts and comments will be emailed instantly to several hundred people. On behalf of everyone's Inbox, if you are advertising items PLEASE provide your contact details – and if you are responding, PLEASE reply to the contact details provided rather than just supplying your own contact

details to hundreds of people in addition to the intended recipient.

Keep it non-commercial

There are two places where advertising in the village is actively encouraged – and the forum isn't one of them:

- Advertisements can be placed in this newsletter from as little as £6 per edition

- Postcards sized ads can be placed in the shop's noticeboard for the princely sum of 50p per week.

With the exception of Shop at The Lee, which is owned by residents of the village and incorporated as a 'not for profit' organisation, the forum is not the place for advertising of goods or services by any business. Buying and selling of small personal items in what would have been small ads back in the day are welcome, but the rule of thumb is that anything in connection with earned income in which the taxman might be interested is not.

Keep it concise

If you've got multiple items to sell, think about how many can be listed on a single post. Do you really need a separate post for each item?

Keep it legal

A reminder that the forum is hosted by The Lee Parish Council who, as an apolitical public authority, have a duty not to permit the forum to be used for posting of any messages which incite, encourage, support or condone any illegal actions or behaviour.

Keep it accurate

Freda is as guilty as anyone of jumping to conclusions, particularly in emotional situations, but please let's all try not to post as fact information which is rumour, belief and conjecture.

Keep it courteous

Whilst there will always be differing opinions on the issues of the day, please keep it polite and refrain from posting anything libellous, defamatory or derogatory about any individual or organisation. Objective criticism is not a problem!

If in doubt...

From time to time Freda is contacted by someone who isn't sure whether or not their post is appropriate.

If you aren't sure whether or not something is suitable to be posted on the forum, please contact Freda's elves, aka The Lee Forum Admin Team, at admin@thelee.org.uk who will always be happy to advise.

Happy posting!!

If you need some specific advice, please email admin@thelee.org.uk giving details of the problem.

Don't forget that answers to various questions can be found on the Common Problems page of the website at <https://www.thelee.org.uk/common-problems/>. Not yet a member of the forum? Complete the application form at <https://www.thelee.org.uk/new-user>

Caption competition

Remember, in last month's edition, we asked what the talking squirrel on the shop sign post might be saying. Well, some of our readers imagine themselves as Doctor Doolittle and have come up with some answers:

"I wonder if this little shop sells nuts."
Dink Soule

"Symeon's nuts come at a high price."
Tom Brockett



"I wonder if they do cashew carry?"
Carol Addison

"I'm searching for Andrew Burnett's lost apostrophe, is this The Lee Shop or is it The Lee's Shop?"
The Editor

Shop at The Lee



For all your daily needs

A community shop, financed and run by the village; the shop lies at the heart of the parish.

Current opening hours:

Mon to Thurs: 8.00 a.m. until 2.00 p.m.
(4:00 pm from 12th April)
Fridays: 8.00 a.m. until 4.00 p.m.
Weekends: 8.00 a.m. until 12:00 noon.

Tel: 01494 837195
shop@thelee.org.uk

When I was

By Sarah Morris Armer

When I was just a little girl
 We didn't have a lot
 My mother kept the lights on
 With some silver in the slot
 The TV was a rental one
 That too was on a meter
 But when I cast my mind back
 Life back then, seemed so much sweeter

The larder wasn't always full
 Of tasty things to eat
 But we didn't notice hunger
 As we played outside in the street
 Our clothes weren't always bought
 from new
 Quite often worn before
 But we didn't follow fashion
 Never thought to ask for more

My mother's purse was empty
 Except of course for dreams
 But she always found some pennies
 To buy us both Ice Creams
 Our shoes were always measured
 Our hair was always neat
 I remember she insisted
 You must take care of your feet!

School uniforms were granted
 Given by the state
 We looked as smart as anyone
 When we walked through that school gate
 In summer we picked berries
 From the hedgerows in the field



Our fingers stained with purple
 We delighted in our yield

No games consoles to keep us quiet
 Our joy was climbing trees
 Making dens in bales of straw
 With grass stains on our knees.
 We didn't know the world beyond
 The place we use to play
 We didn't have a single care
 As night just followed day

The girls would make their perfume
 With petals from the flowers
 Often getting in hot water
 Cos the blooms were never ours
 We'd nick the fairy liquid tub
 To have a water fight
 And on the baking concrete
 Our names we'd always write

**NO
 MORE
 EXCUSES**



**FOLLOW
 THE RULES**



Buckinghamshire
 Council

Stay safe, protect Bucks

We shared bikes and we shared footballs
 Used our sweaters as the goal
 And when the bitter winter came
 We'd fill buckets up with coal
 Every single chimney
 Cast a plume into the sky
 As we huddled by the fire
 With a meat and tatty pie

Scratch your name on the frosty pane
 Before the curtains shut
 Tucked under a heap of blankets
 No choice but to stay put
 We never took a holiday
 Certainly not abroad
 A day out to sunny Blackpool
 Was all we could afford

We'd paddle in the Irish Sea
 And sit down in the foam
 Ride a donkey up the beach
 And wish we could take it home
 Our kitchen was always full of steam
 From the endless pans of spuds
 And we volunteered for washing up
 To play games with the suds

We made toast on the open fire
 I can taste it to this day
 Dripping in salted butter
 It seems half a world away
 Every Christmas there were presents
 Underneath our tinsel tree
 And always we were overjoyed
 Whatever they may be.

In and out of houses
 Up and down the street

MARTIN THE MILKMAN

Refrigerated delivery of fresh
 milk, dairy produce, bread,
 eggs, fruit juices and more.

To place an order call

01442 833944

PHONES MANNED 4 PM - 6 PM
 ANSWERPHONE AT OTHER TIMES

Borrowing cups of sugar
 We helped each other make ends meet
 The house phone had a lock on it
 So we couldn't run the bill
 And we only tasted Lucozade
 If we were gravely ill

The doctor saw you on your sofa
 With his stethoscope and bag
 A week off school was endless
 If you managed with the blag
 And when you went to bed at night
 That then was mother's time
 You'd hear her downstairs singing
 To Johnny Cash or Patsy Cline

Life back then was infinite
 You never could grow old
 There was nothing to be frightened of
 With your mother's hand to hold
 Death was never mentioned
 Too young to understand
 It's seems that life would just work out
 The way you had it planned

FOR ALL YOUR PEST CONTROL NEEDS...

VERMINATOR UK

- Wasps
- Rats & Mice
- Squirrels
- All flying and
crawling insects
- Solar panel
proofing against
pigeons also
undertaken



THEY WON'T BE BACK

**Call Tim Simmons
 THE VERMINATOR**

**07734 649305
 0808 1972 730**

verminatoruk.com | info@verminator.com

But the years passed in minutes
 There was no time to spare
 Overnight it seems... the silver threads
 Adorned your mother's hair
 Your endless days were over
 As time raced away at pace
 And the happy days of innocence
 Disappeared ... without trace

Don't waste a single minute
 Of this life with which you're blessed
 Things change in just a heartbeat
 The ride can come to rest
 Good times become just memories
 Faces fade and smiles are lost
 Don't wish away a second
 Hang on... at any cost

When I was just a little girl
 We didn't have a lot
 But one day... all of that nothing
 Will be the greatest gift I've got.

Mervyn's Carpet & Upholstery Cleaning Services

Independent carpet cleaning
 specialist with over 30 years
 experience.

**CARPETS. UPHOLSTERY.
 RUGS. HARD FLOOR.
 CARPET PROTECTION.
 FULLY INSURED.**

Friendly and reliable service.
 Most work by recommendation.
 Environmentally friendly
 cleaning materials.

For a no obligation quote 'phone
01525 371724 or **07975 847027**
 Email: mersu@btinternet.com

Dear Diary

The fastest way to let everyone in the parish know about an event you are arranging is to publish it right here in the Newsletter. Contact the Editor by the 12th of the previous month (see contact details on page 1).

April

Thursday 29th April. Induction service for Revd Haywood. See page 14.

Coming soon

Thursday 6th May. County and Parish Council Elections. See page 5.

Tuesday 11th May. The Lee Parish Council Meeting. 7:30 pm. Online.

Saturday 31st May. (Not just) Greek food event at the Shop at The Lee. See page 4.
Ballinger Horticultural Society
 Please check website for all up-to-date details ballingerhort.co.uk

Directory of local contacts

Ballinger Horticultural Society

Chairperson: Katherine Hersee
 07801 948650, kjhersee@gmail.com
 Membership Secretary:
jennywooding@btconnect.com

Ballinger War Memorial Hall

Bookings: Jane Ogden, 837379

Ballinger Evening WI

Contact: Jo Laurie, 863492
watercolours@kitty4.co.uk

Lee Common C of E School

School office, 837267
office@leecommon.bucks.sch.uk

Lee Common Methodist Church

Marian Tomkins, 837479

Lee Common Scouts**Group Scout Leader**, Chris Nevill. 864881

gsl@1stleecommon.co.uk

Scouts, Enzo D'Alessandro; scouts@1stleecommon.co.uk**Beavers**, Karen Bruton;

beavers@1stleecommon.co.uk

Cubs, James Bruton;

cubs@1stleecommon.co.uk

Shop at The Lee

Symeon Economou, 837195

shop@thelee.org.uk

St John the Baptist Church

See centre pages.

St Mary's Ballinger

Contact: Anne Ellis, 837247

anne.ellis1004@gmail.com

Tennis Court @ Parish Hall

Bookings: Pippa Hart 07785 323232

(ideally WhatsApp)

The Arts Society Ballinger

Chair: Lesley Wickham, 865480

ballinger@theartssociety.org

The Lee Cricket Club

www.theleecc.org.uk

Secretary: Mike Harris

07788 345555

The Lee Flower Show

Chairman: Jonathan Batten, 837450

The Lee Newsletter

theleenewsletter@gmail.com

The Lee Old Church Trust

Secretary: Pam Garner 837501

The Lee Parish Council

Clerk: Hayley Farrelly, 07704 909324

clerk@thelee.org.uk

www.thelee.org.uk/pc

Allotments: Alison Weir, 837529

The Lee Parish Hall Committee

Bookings: Anne Barnett, 837796

Pippa Hart, 837340

Chairman: Tony Lea, 837237

The LeeWay

Contact: 07845 029500

The Newsletter

The Lee Newsletter is published 10 times a year and distributed free to all households in the parish... and a little beyond. The views expressed in it are not necessarily those of the Editor.

We welcome letters and articles of interest and relevance to The Lee. Copy should be sent to the Editor of the month (see page 1) by the 12th of the month before publication.

Letters should ideally run to no more than 200 words and articles to no more than 700 words; material may be edited and may appear on the village website www.thelee.org.uk unless consent is specifically withheld. Anonymous contributions are not accepted.

To advertise or place an insert, please contact Paul Apicella on 837377 by the 12th of the previous month.

If you have photographs for publication please contact Jonathan Batten on 837450 or email battenjonathan@hotmail.com.

For queries regarding distribution contact Colin Sully on 837760.

Other members of the Editorial team: Zoe Berkeley, Ruth Fowler, Phil Harrison, Liz Macann, Jen Ogle and Adam Speller.

Printed by Orbit Press: Chesham. 01494 778053.

To book the Parish Hall or Scout Hut

'phone Anne Barnett on 837796

Rates	9 am - 1 pm 2 pm - 6 pm	6 pm - midnight
Mon - Fri	£30 or £10/hr	£45 or £10/hr
Sat/Sun	£12/hr	£70
Bank Holiday	£12/hr	£70
Car park only	£10	
Crockery/cutlery	£15 (hire outside the hall)	



Sales & Lettings

64 High Street Great Missenden

Buckinghamshire HP16 0AN

Tel: 01494 890990

email: info@jeremyswan.co.uk

www.jeremyswan.co.uk