



NEWSLETTER

For The Lee, Lee Common, Hunts Green, Kings Ash and Swan Bottom

From the Editor

By Phil Harrison

How wonderful it is to see the Dear Diary section filling up with activities over the coming weeks after months of very little other than Zoom events (see page 22).

We also share the joy of a village wedding and send our congratulations and best wishes for a long and happy life together to Ellie Weir and Richard Nichols (see page 3).

The Methodist Church celebrates the 182nd anniversary of the chapel in Lee Common with a special service on 1st August. An amazing milestone and part of our local history.

Unfortunately, the uncertainty surrounding the lifting of the restrictions has meant the cancellation of the Flower Show for the second year running. We feature the first part of an article (see page 16) written by Susan Cowdy for the 1992 centenary souvenir brochure to celebrate this special local event. This clearly articulates the unique nature of the show and how it evolved over the years. Hopefully it will be with us in 2022.

As we approach our summer break with the next edition being September, I thought it worth a mention that the Newsletter is supported and funded by its advertisers. Your continued support of their services is important and if you can mention that it was a result of their advert in the Newsletter that you

gave them your business it can only help reinforce the relationship.

Please send your contributions for September's edition to the editor at theleeneewsletter@gmail.com by 12th August.

Your letters

Village Walk

To the Editor

The village walk resumed again on 3rd June and eight of us had a lovely walk and chat on our way to Ballinger and back, with the countryside looking glorious in the sunshine.

The walk will, hopefully, now be held on the first Thursday of every month meeting at 9:30 am on the green. The next one will be 1st July and then 5th August.

I do hope lots of you will join us. Canine friends are welcome too.

Judy Hart

Swan Bottom



Emoji or not?

To the Editor



With the extended spell of 😊 ☀️ and 🌿 🏠 on the 📧, I wonder if the 🏠 has a policy on the use of emojis in its letters?



👍 Bottom

‘Bob a Job’

To the Editor

In last month’s edition the Scout Leader, Enzo, asked if we could think of ways the Scouts could get involved in the community.

Something I have long thought would be great to reintroduce is ‘Bob a Job’.

It used to be a real win-win with the boys earning the bob (a shilling for you youngsters out there – now 5p – which went a long way then!) and the neighbours getting cars cleaned, gardens weeded, shopping done etc. Everybody got to know each other in the process. Methinks the rate would have to rise though, at least in line with inflation...

Liz Macann

Lee Clump

Suspicious emails and text messages

To the Editor

If you receive an email you’re not quite sure about, you should report it to the Suspicious Email Reporting Service (SERS) by forwarding the email to report@phishing.gov.uk

Your reports will help government and law enforcement agencies to remove malicious emails and websites.

If you receive a suspicious text message, you can report it by

forwarding the message to 7726 which spells SPAM. It’s free of charge and enables your mobile network provider to investigate the origin of the text and take action, if found to be malicious.

Neighbourhood Alert

Buckinghamshire

The Lee in the Chilterns

From the Chiltern Society



The Summer edition of the Chiltern Society’s magazine contains many references to The Lee and its residents, including:

- the Chiltern Link – a nine-mile walk, without any stiles, running through The Lee from Wendover to Chesham
- a photo of The Lee green showing the iconic village memorial and the Cock and Rabbit
- the temporary (long-term) footpath closures because of HS2 work
- tree planting at Swan Bottom
- a tribute to Barnaby Osborne
- a photo of footpath volunteers, including The Lee’s Dick Chinnery.

In addition, the magazine contains features and articles on a wide range of subjects, including a programme of summer Chiltern events and activities, and an online HS2 update, with brilliant photography by Society members.

To find out more about the society or to become a member visit the website www.chilternsociety.org.uk

Wedding Bells

By Ellie Weir

When Richard and I started planning our wedding last year, the threat of Covid was at the forefront of our minds. We hoped that by the start of June 2021 things would be better but there were many moments when we thought it might all have to be scrapped.



One thing that was never in doubt was that we had the help and support of so many people in the wonderful Lee community. My parents, Alison and Malcolm, the Stewart-Libertys who kindly gave us use of their orchard and the many people throughout the local community who brought it all together.

The weather was guaranteed by the loan of two lucky umbrellas from Elaine, Bernard dusted off his 1952

Bentley R, one of his lovely Bentleys, to get me to the church, members of the Old Church Trust cleaned the Old Church and Louise played the piano beautifully for us.



Trevor opened up the church, Bette's beautiful dried rose petal confetti added more colour to our day, the coconut shy and skittles brought much fun and competition, Chris mowed the orchard, The Cock and Rabbit stored our ice to keep us all cool and Adele looked after the dogs Monty and Holly.

That Revd Haywood was able to marry us in the Old Church, his first wedding in this parish apart from his own, was very special.

It was a truly wonderful day. We would like to take this opportunity to thank everyone who was part of it.



Running round the tree

Type 2 Diabetes and me!

By Stacey Lyons

“Chase me Bobon, chase me!” cried a delighted two-year-old boy. I chased my grandson around the tree several times then stopped in utter amazement. “Did you see that?” I asked my grinning daughter. “Yes, I had no idea you could run!” she exclaimed, “I didn’t think I could either” I replied. This was a glorious day in June last year, running round the big tree at The Lee. The joy was immense.

I was diagnosed in 2006 with Type 2 Diabetes – I was also overweight. I was terrified as to the prognosis but found it impossible to really lose weight. I was put on medication.

The medication increased slowly over time, as did the weight. I reached 15st 7lbs at my heaviest which was very big for my frame.

I had to see my doctor for the result of my HbA1C blood test. He informed me he needed to consider giving me insulin injections as I was on the maximum dose of metformin. I was devastated – I’d always thought insulin injections were just for Type 1 Diabetes.

I refused. I had just started a new diet and I cringed while I explained this to my GP – waiting for his admonishments. When I explained what it was – a very low calorie and low carbohydrate diet as recommended by the findings from the DiRECT research programme and Professor Roy Taylor – he was ecstatic and couldn’t recommend it highly enough.

My HbA1C test had shown my blood sugar levels to be 97 – three months later they were down to 47 and I had lost two stone. My GP sent me a very congratulatory text message.

My eating habits have changed finally – I enjoy life more. I still eat out and have the odd drink but I look and feel so much better.

If you see a mad woman running round the tree at The Lee – it may be me – with a big grin on my face!

Bridge too far?

By Kathryn Dickinson et al

This recent hand presented a bidding challenge for N-S and a defensive challenge for E-W.

<p>♠ 10 7 6 4 3 2 ♥ K J 9 ♦ A 6 ♣ J 2</p>	<p>♠ J 5 ♥ Q 10 7 4 ♦ Q 10 8 7 3 ♣ 7 6</p>
<p>♠ 8 ♥ 6 5 2 ♦ J 9 4 ♣ K Q 9 5 4 3</p>	<p>♠ A K Q 9 ♥ A 8 3 ♦ K 5 2 ♣ A 10 8</p>

Dealer: North
Vulnerability: none

At our table, the bidding started:

N	E	S	W
pass	pass	2NT	pass

How would you complete the bidding and how do you think it played? See page 11.

Prepared-Lee

By Enzo D'Alessandro



Summer is upon us, and the Summer Camp keeps coming up in conversations with and among Scouts. Summer Camp is the culmination of the year, where we put all the skills we developed during the year into practice, a time away from the day-to-day routine, a time for independence and challenge.

Alas, the pandemic is still ongoing, and we have to plan accordingly. In the meantime, equipment and skills need to be maintained and kept up to date: the Scouts always keep to their motto – “Be Prepared”. For instance we have been looking at orienteering and camping skills as part of the preparation, all with real life practical examples. Indeed, for example, the importance of combining pacing with compass skills became apparent and urgent when trying to keep a course in the Park while avoiding moving obstacles. The cattle were particularly curious and interested in us – maybe they wanted to join? I need to look at the latest membership guidelines. Where would you put the membership badge on a cow?

We have just received a number of tents; the Scouts pitched them for the

THE REAL FOOD DIET

The Real Food Diet is for fast weight loss for everyone but has been designed especially for people with Type 2 Diabetes, quickly reducing blood sugar levels.

Menus created by our chef with all fresh food delivered straight to your door, for you to prepare at home – no bars, no shakes, no ‘ready meals’. A week’s worth of food which makes sticking to the diet so much easier – no shopping, so no temptations.

A ‘diet in a box’ if you like. With various plans our prices start from £14.30 a day for our 8 week plan.

What price would you put on changing your health, surprisingly quickly and easily?

Go to www.therealfooddiet.co.uk
or call **01494 972384**

It is advisable to notify your GP when starting a new weight loss programme.

first time in mid-June. Nobody had seen these tents before (including the Leaders), but all the tents went up and were then dismantled very quickly. “Can we stay in the tent for a while?” was a recurring question... Not this time but hopefully soon we will be able to spend some time in the Scouts’ natural state: around a campfire, preparing to get in a tent for a good night’s sleep after a busy, exciting day.



As usual, if anyone wants to get involved, contact details are at the back of the Newsletter.

P.S. thank you readers for the suggestions in response to last month’s request!

Forum Fred



Far...

Whilst from time to time The Lee Forum receives applications from people outside the local area, some people make contact with The Lee website rather than the forum. Recently Freda and I have been able to:

- point someone, who used to visit her aunt and uncle in The Lee for childhood holidays, towards The

Lee in Living Memory and the Newsletter for local reminiscences and news

- deliver local history books as an 80th birthday gift for someone who’d spent part of her childhood in the village
- send a photograph of her grandfather’s gravestone in the churchyard to someone whose mother is no longer able to visit.

... and wide

If you’ve ever searched for “The Lee Forum” on Google, you may have noticed that there are some useful pieces of information about the Forum now available on the search results page. In particular, there is now a note with a link to the forum for Lee in London, to save us having to send individual emails to those who find The Lee Forum by mistake.

Commercial advertising

As you will know, The Lee Forum has never permitted commercial advertising, and in recent weeks it has been necessary to remove a small number of posts which breached this guideline. Reminders have also been sent to those who posted adverts, advising them that their posts have been removed and pointing them towards the Code of Conduct which they accepted as part of registration.

Freda and I decided to make an exception for the summer for two local business which stray over the line into community amenities – we’re talking of course about The Cock and Rabbit and The Old Swan. Both pubs are altering their opening hours and available service on a regular basis in line with changing Covid regulations, and the forum is the most appropriate place for them to let everyone know what is happening, and when.

Another reminder

Most residents give incredibly positive feedback on the forum and appreciate the range of information contained in the postings. However, the single thing that annoys more people than anything else is when people wanting to buy or sell an item or a service fail to put their contact details on their first posting. This inevitably leads to further emails, describing in great detail all the follow-up exchanges: “Can I ring this afternoon?” “Are you in on Saturday?” “I’ll leave it by the back door.”

All these emails go out to hundreds of forum subscribers, and this can easily be avoided if the original poster includes his/her email address and/or telephone number. Most forum users understand this; but for some, the penny still hasn’t dropped.

Freda and Fred on the Forum

It’s also become abundantly clear that many forum members outside the parish don’t get to read our musings in this newsletter, and thus aren’t aware of the hints, tips and general advice published each month.

We’ve recently started posting this column on the forum, to those resident outside the parish, to make sure that they too have the opportunity to benefit from Freda and Fred’s thoughts and insights.

If you need some specific advice, please email admin@thelee.org.uk giving details of the problem. Don’t forget that answers to various questions can be found on the Common Problems page of the website at <https://www.thelee.org.uk/common-problems/>. Not yet a member? Complete the application form at <https://www.thelee.org.uk/new-user>



PLUMA SPANISH KITCHEN & TAPAS

Traditional Spanish fare, using fresh, local ingredients alongside authentic, regionally sourced Spanish produce.

Our beautiful surroundings fuse the rustic textures of Spanish culture with the clean dynamics of a modern space, making for a truly original food experience.

18 High Street, Old Amersham, Buckinghamshire HP7 0DJ
+44 (0) 1494 728383 info@plumarestaurant.com
www.plumarestaurant.com



PLUMA

----- *Advertorial* -----
**Easing stress
 and strain**

By Sophie Underwood

I qualified as a Reflexologist and Massage therapist over 20 years ago and have been helping locals deal with the stresses and strains of lockdown, so I was delighted to be offered the opportunity to introduce myself in the newsletter. I've lived on Potter Row for over seven years with my husband and two children. Our daughter goes to Lee Common School and our son will be starting pre-school at Little Bears in St Leonards soon.

Reflexology, massage and gentle facials can all help tremendously with aches, pains, stress and an increased feeling of general well-being.

Reflexology is a therapy that uses gentle pressure on specific points along your feet to help stimulate the body into healing itself by improving circulation, reducing stress, pain and restoring natural balance.

Indian Head Massage focuses on the acupressure points along the head, neck and shoulders and it can really help to increase joint mobility and flexibility in these areas, benefitting people who suffer from headaches, migraines and back pain.

For facials I use Tropic skincare for all my treatments, which is vegan, cruelty-free and made freshly using sustainably sourced, natural ingredients.

I offer a mobile service so I can give you a relaxing treatment in the comfort of your own home.

If you have any questions about the treatments, please do give me a call on 07970 022190 or contact me at sophieunderwoodtherapies.co.uk and I would be really happy to talk to you.

Potholes

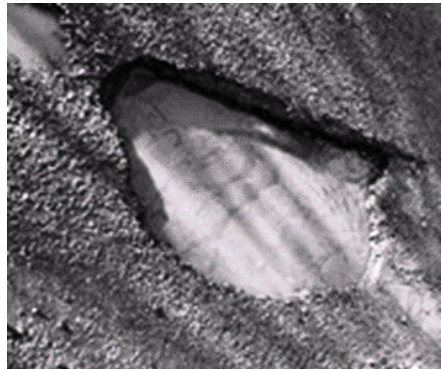
...and how to get them fixed

By Cllr Simon Moule

The parish roads are something which attract a good number of posts on the forum and also prompt direct contact with councillors.

Transport for Buckinghamshire (TfB) has responsibility for maintaining the public roads, acting on behalf of Buckinghamshire Council as the highway authority. This responsibility is not devolved to The Lee Parish Council, so TLPC has no responsibility for maintaining the parish roads.

TfB can only act if they know about a problem – as a matter of routine, most of the roads in the parish will be inspected annually, so if you see something which concerns or worries you (but see minimum size requirements below), please report it on FixMyStreet or it may go undiscovered (and un-fixed) for 12 months. www.fixmystreet.buckscc.gov.uk/



Potholes requiring urgent attention, i.e. bigger than 75mm deep x 300mm diameter (3" x 12"), should be dealt with rapidly (two hour response time) because these are always classified as

a significant hazard. They should be reported by calling [01296 382 416](tel:01296382416).

The aim of this article is to provide a bit more information of the process used to respond to the reported issues and to go some way to provide a framework of expectations for those reporting issues.

FixMyStreet is very easy to use (even on a mobile phone). Please try to document as much detail as you can manage because this is very helpful. There is the facility to upload photos too. An indication of size is also a really good idea as the larger the hole, the more likely it is to be fixed.

Risk assessed

Parish councillors recently met with Cllr Tricia Birchley and the TfB Local Area Technician to discuss some specific problem areas and to better understand their process. As you might expect, TfB takes a risk-based approach to prioritising the repair of road defects. You might disagree, but these are standards agreed and expected by Buckinghamshire Council.

As a quick guide, potholes need to exceed 40mm depth x 300mm diameter (1⁹/₁₆" x 12") before being considered significant enough to warrant an investigatory inspection. Anything smaller than this reported on FixMyStreet is likely to be ignored.

The outcome of an inspection (if the defect meets the criteria) will be to assign a priority for action. This is based on a variety of factors including the amount of traffic using the road and the severity of the defect. Most of our roads are local access roads which is the lower priority of carriageway, hence even significant defects may not be high priority.

Once assigned a priority, this informs the response time which can

SHORT-TERM RENTALS

From £375 per week (all inclusive)

**Self-catering holiday
or temporary accommodation
at Lee Common**

Moving house?

Completion dates don't coincide?

House sale falls through?

Builders outstaying their welcome?

Expecting Visitors?

Need extra accommodation?

*Self-contained Period Property:
sleeps four guests*

Tel: 01494 837798

e-mail: lowerbassibones@yahoo.co.uk



SOPHIE UNDERWOOD THERAPIES

REFLEXOLOGY

•
SWEDISH MASSAGE

•
INDIAN HEAD MASSAGE

•
FACIALS

sophiepw@gmail.com

07970 022190

sophieunderwoodtherapies.co.uk



MEMBER

vary from two hours (emergency to make safe with coning-off and warning signs), two days, five days, 28 days and made good at the time of next routine maintenance.

Sadly (for us) many potholes larger than the minimum 40mm depth x 300mm diameter could be assigned a Low Priority (Category 2L defects) meaning more than 28 days repair. This could mean repair within the next available programme, schedule a more detailed inspection, monitor through more frequent inspections or review condition at next inspection, based on an assessment of risk of deterioration before the next visit.

For full details (and there are a lot of them) search for "Bucks Highway Inspection Policy" or take a look at the new Council Services page on the village website at www.thelee.org.uk/council-services/

FOR ALL YOUR PEST CONTROL NEEDS...

VERMINATOR UK

- Wasps
- Rats & Mice
- Squirrels
- All flying and crawling insects
- Solar panel proofing against pigeons also undertaken



THEY WON'T BE BACK

Call **Tim Simmons**
THE VERMINATOR

07734 649305
0808 1972 730

verminatoruk.com | info@verminator.com

TfB will only pay compensation caused by a pothole if they have failed to repair it in the specified time – if it has not previously been reported they will claim that they were unaware and therefore not liable.

The best (and only!) way to improve the parish roads is to report defects on FixMyStreet, but TLPC would like to hear of instances where there seems to be a significant issue and reporting via FixMyStreet has not worked. We may be able to help.

Όλα ήταν ελληνικά και τουρκικά

By Symeon Economou

As you will know by now, Shop at The Lee held its Greek Food Event on Bank Holiday Monday at the end of May. Every year we buy more and more produce, every year I have a sleepless night worrying that nobody is going to turn up and every year we sell out by 11:00 am.

Lots of people remark that it must be hard work putting it on. My secret is that the procurement is such a pleasure. Almost everything comes from authentic Greek and Turkish shops in North London and much of it is made for us, to order, the day before. Collecting the orders takes me back to markets in Cyprus where chaos is the norm, the concept of queueing is unheard of and unless you have sharp elbows you won't get served. The upside of all this is that everyone understands the process, everyone is cheerful and friendly and servers, when they finally get to you, are delightful. I love it and wouldn't

have it any other way. (It would be true to say that, to a large extent, we recreated this on the day too!)



Packing it all, pricing it and laying it out early in the morning is the real challenge but then the lovely volunteers pitch in with enthusiasm and gusto and carry it all off so well. By the time everything was packed away everyone was tired, hot and sticky (after selling nearly 200 baklava), but immensely satisfied that it was such a success.

At the end of it all, whilst we made a modest margin, the success for us was the gratifying turnout. For much of the morning it was really lovely to see so many people buying, chatting and catching up. It was easy to imagine that this pandemic was past and everything was how it used to be – a little premature perhaps but hopefully a taste and reminder of what is just around the corner.

THE LEeway – YOUR VILLAGE SUPPORT TEAM

If you have difficulty getting to your doctor or the hospital, doing your shopping or would like a home visit and a friendly chat, then please ring:

07845 029500

Mon - Fri: 10 am - 4 pm. Sat: 10 am - 12 noon. Please give us reasonable notice of your requirement to help us organise it.

Bridge too far?

At our table the bidding continued:

N	E	S	W
3♥*	pass	4♠	pass
4NT**	pass	5♦	pass
6♣	pass	pass	pass

* Transfer bid

** RKCB

West led K♣, which South won, took out trumps and made the contract by setting up a club winner, avoiding the need to take the heart finesse.

Without the transfer bid, North would be playing the contract, there would be a different lead and the contract would not make.

BODYMYND

wellbeing

Qualified L4 Personal Trainer & Online Fitness Coach

"The groundwork of all happiness is good health"

At BODYMYND Chloe takes a holistic approach, delving into not only your physical health but also your mindset, sleep, nutrition and mental wellbeing.

Online Coaching and
Personal Training
Contact Chloe to start your
journey today

bodymyndwellbeing@gmail.com
www.bodymynd.co.uk

Services for July

St John the Baptist, The Lee

Information relating to our services will be published regularly on The Lee Forum.

Church flowers

Our (new) church at The Lee has been a special place of worship for many years. Until the restrictions imposed for Covid-19 came into place with the closure of the church, we have always had flowers on the altar for services, (apart from during Advent and Lent). Now with the arrival of our new vicar, Chris Haywood, we are opening the church doors once again, with flowers on the altar for our services.

Over the years many of our congregation have moved, or departed, and extra support with flowers for services would be appreciated. Perhaps you would be happy to help? You might like to mark a special anniversary date or honour a loved one with flowers on the altar. Remembering this way can be a comfort.

We need the two altar vases filled for each service and perhaps contributions to decorate the church windows at our times of celebration at Easter, Harvest and Christmas. You do not need floristry skills, or to be a church goer; just a commitment to bring and arrange flowers once a year.

Jane Neal will be standing down as co-ordinator in January 2022, so if there is anyone willing to take on the running of the flower rota, that would be great too!

Please contact Jane Neal on 01494 837264 rodandjane.neal@gmail.com for information or to volunteer.

Contacts: *Vicar:* Revd Chris Haywood. *Parish Administrator:* Joanne Evans (07811 094416). *Churchwardens:* Trevor Pearce (01494 837601) and Mike Sherratt (07597 158269). *Verger:* Bill Pearce. *Treasurer:* David Stephenson (01494 867617).

The Lee Old Church

4th 8:00am HC

St Mary's, Ballinger

4th 9:30am HC

Thank you to everyone who has visited St Mary's recently. A warm welcome awaits anyone who would like to drop by as the church is always open.

Contacts: *Associate Church Wardens:* Maggi Cameron 01494 864790 and Anne Ellis 01494 837247.

Lee Common Methodist

July

11th 3:00pm HC Revd Adam Wells

August

1st 3:00pm Revd David Jebb
182nd Anniversary
Service

22nd 3:00pm HC Revd Adam Wells

Contact: Graham and Susan Evans 01494 580016.

The Lee Parish Council update

By Hayley Farrelly, Clerk

Roles...

The various responsibilities within the Parish Council have now been allocated, with all councillors settling into their new roles. Full details can be found at www.thelee.org.uk/areas-of-responsibility/ and in future months we hope to bring you some insights as to what is involved in each.

... and holes

Two TLPC councillors met recently with Cllr Patricia Birchley of Buckinghamshire Council (BC) and Joe Saunders, the Local Area Technician, to discuss the parlous state of some of the roads in the parish. As a result of a walk along Princes Lane it was agreed that 'make-safe' repairs should be carried out to the worst of the potholes, while all will be visited by the jet-patcher over the course of the summer.

Joe explained that there are three main categories of repair:

- make-safe which are temporary repairs made at short notice for particularly bad potholes
- jet-patching which are repairs that will patch the area of road around potholes, and which would usually follow on some months after a make-safe repair
- full road resurfacing

Cllr Simon Moule has written a separate article (see page 8) about how Buckinghamshire Council assess and prioritise potholes for repair.

A walk in the woods...

The woods are always a delight to walk through, but the difference between footpaths, bridleways and byways isn't always clear.

A **footpath** is defined as a highway "over which the public has a right of way on foot only", so horse riders and cyclists are restricted to bridleways and byways. A landowner may however, at their discretion, give permission for horses and bicycles to be ridden on footpaths.

Local authorities have a duty under section 122 of the Road Traffic Regulation Act 1984 "to secure the expeditious, convenient and safe movement of vehicular and other

HOME REARED MEATS, LOCAL PRODUCE & HOME COOKED FOOD



Free Home Delivery
Wednesday - Friday

Chequers Estate | HP17 0UT
SHOP Tues - Fri 10 - 6 & Sat - Sun 10 - 4
KITCHEN Fri - Sun 10 - 4
www.buckmoorendfarm.co.uk



Swan Bottom based glazing
company specialising in
Replacement UPVC Double
Glazed Units

Repairs to UPVC Windows & Doors
(hinges, handles, draught seals,
jammed sashes)
Splashbacks/Mirrors
Glazing Repairs

**24/7 Emergency 'Board-Up'
Call Out Service**

Tel: Macauley Hearn 01494 919015

Mob: 07889 786895

E: Macauley@contractglaze.co.uk

traffic (including pedestrians)". Given this duty, in situations where horse riding or cycling on footpaths is causing a problem to other users, the local authority – in our case Buckinghamshire Council – could use their powers to make bylaws or traffic regulation orders preventing this use. TLPC is not however aware of any such orders within the parish.

A **bridleway** can be used by pedestrians, horses and cyclists but horse-drawn or powered vehicles are not permitted.

A **byway** open to all traffic (BOAT) is a highway over which the public have a right of way for vehicular and all other kinds of traffic but which is used by the public mainly for the same purposes as footpaths and bridleways. **Restricted byways** are limited to use on foot, on horseback or by a vehicle other than mechanically propelled vehicles; horse-drawn carriages are permitted.

There is an excellent map at pro.w.buckscc.gov.uk/standardmap.aspx which clearly identifies each path.

...or through the allotments...

In early June, Parish Council and Chiltern Society Footpath Volunteers completed the installation of the new gates on Oxford Street into the allotment/playground areas: the vehicle and pedestrian gates had both

MARTIN THE MILKMAN

Refrigerated delivery of fresh milk, dairy produce, bread, eggs, fruit juices and more.

To place an order call

01442 833944

PHONES MANNED 4 PM – 6 PM
ANSWERPHONE AT OTHER TIMES

deteriorated rapidly in recent years. With water pipes and electricity cables running under the entrance, careful digging was necessary by the volunteers, who received additional guidance and help from Paul Humphreys' men.

We are hopeful these gates will last another 20 years!



... with a four-legged friend

Despite the signs at the playground and allotments requesting that all dogs be kept on leads and excrement cleared, there still remains a great deal of dog poo. It is unpleasant for other users of the area when a little heap is found right in the middle of the gate entrance, on the footpath or in the allotments as has been seen of late, but of even more concern is the recent fouling of the play area and the football pitch which is a health hazard. Parents should expect their children to be able to play safely without risk of infection. Dog-owners and dog-walkers, please observe the signs, keep your dog on a lead and on the path as

you walk through the allotment and playground area. Please carry and use a bag to clear up any mess.

Council services

Many of the services enjoyed by residents of The Lee are delivered by Buckinghamshire Council (BC) and not The Lee Parish Council. I'm sure I'm not alone in finding that, although comprehensive, the BC website can at times be difficult to navigate.

To help with solving problems ranging from potholes to missing bin collections, broken stiles to flytipping and much more, the Parish Council has launched a new website page at www.thelee.org.uk/council-services/ with links and lots of helpful hints for the best way of reporting a problem.

Planning applications

Finally, a reminder that the Parish Council continues to post notices to The Lee Forum, as we receive them, of all planning applications within the parish, with a reminder to residents that if they have specific comments to make, they should respond directly to the planning authority. If a resident wishes to make planning-related comments to the Parish Council, they should contact me on 07704 909324 or email clerk@thelee.org.uk. Such comments will be taken into account by the Parish Council when forming its own view and will be unattributed.

New gates for old



Cromar Carpets Ltd

**CARPETS, VINYL AND
WOOD FLOORING
SUPPLIED AND FITTED**

**9-11 STATION APPROACH
GREAT MISSENDEN
01494 862125**

Pippa Hart Photography



**Natural & Informal
Black & White
Portraits**

**01494 837340
www.pippahart.com**

Dynamos Cricket

for girls and boys at Ballinger

By Bill Senior

Dynamos is a new cricket format for 8-11 year old boys and girls to try the game in a relaxed and friendly setting. Ballinger Waggoners Cricket Club is running Dynamos sessions for boys and girls this summer. It's a series of action-packed hourly sessions of cricket fun that aim to introduce more boys and girls to cricket while having fun.

Ballinger's first session was run by Bucks' top coach Nigel Kerry on 11th June. On a sun filled evening there were a few girls and boys there and some who hadn't played before. It was a fast moving, dynamic session where the kids ran through a series of skills and played a game of quickfire countdown cricket.

Don't worry about cricket being slow, the game is very quick. Each hour-long session involves some skills training and a game. The programme is for six sessions. It is very social too and parents also take part. The kids get a personalised T-shirt and other benefits.

The club is running two groups – mixed and girls. We have many other cricket groups for boys and girls with training and games over the summer and indoors in the winter. If interested please contact Bill Senior on 07786 274836 or email Darren Wilson at darren.ballingerwaggoners@gmail.com



The Lee Flower Show

The First Hundred Years
(part 1)

1992 marked one hundred years since the first Flower Show was held in 1892. A souvenir booklet was produced, with an introduction by Susan Cowdy (née Stewart-Liberty), then President of the Flower Show and resident in The Lee since 1914.



The Flower Show has always been 'The Meeting Day of the Year'. In 1927 it was written in The Lee Magazine "We may well be pleased with OUR show, it really is our own, all the officials are to be congratulated on the kindly and efficient way in which they carry out their work". These same words could well be used again now, 65 years later.

The present Lee Flower and Art Show has been run under several different titles through the years. The Sunday School Treat, The United Treat and Flower Show, The Lee Fête, and School Treat and Flower Show.

At the outset and for many years after a member of the local Liberty family, resident at the Manor, acted as

Chairman. Financial support was also given by the Liberty family until 1922, when the Show became self-supporting. The Show was held every year except during 1914 and 1939 war years. At this time large celebrations were not in keeping as can be appreciated by the list of names on the war memorial which stands on The Lee green.



The marquee in 1925, looking very similar to that used today

In 1920, when the Show recommenced after the war, several new competitions were added. The race for men for The President's Cup, bowling for a live pig, hat trimming competition for men. Each man was given rolls of crêpe paper, pins and a large straw hat to be decorated for completion in no more than fifteen minutes, then worn and judged. Competitive classes for dahlias and a special needlework class for women including making a child's overall, the prize for which was 5/- (25p) a comparatively large sum for those times and one that must have been greatly appreciated.

Every year and to this day, the weather is a main topic. Competitors, stallholders, and organisers gaze anxiously at the morning clouds... Quote from the Parish Magazine of



NICHOLAS JOHN

**Your local property services company
for internal and external works**

- * City and Guilds qualified
Multi-Skilled Tradesman
- * Forty-five years' experience
- * Fully insured for your protection
- * References supplied on request

Find out more at:

www.instagram.com/nicholasjohnbatty

Mobile: 07841 395867

Home: 01494 863275

nbatty@btinternet.com



Domestic & Commercial Electricians

For all your electrical needs

- ✓ Fault Finding & Repair
- ✓ Testing & Maintenance
- ✓ Extra Sockets & Lights
- ✓ Vehicle Charging Points
- ✓ Periodic Condition Reports

Fully qualified & insured

Call - 01628 522888
electrical@bpsltd.co.uk



1923 from the Vicar "Once again we deplore the unkindness of the weather, it really was too bad! Such a lovely day before and after to accentuate our disappointment and impotence". Prior to that in 1920 "it is hoped that 21st July will be fine, for on that day the School Treat and Flower Show will be revived (for the first time since 1915)."



The gentlemen modelling their self-made hats



The Procession makes its way through the village to the church at the start of the Sunday School treat that was to become The Lee Flower Show

Mike Lake
 Friendly & Local
Painter & Decorator

For that professional touch

Interior & Exterior
 Also Property Maintenance

For a free quotation please call:
 01494 866873 / 07723 017005
 mikelake42@talktalk.net

This was the 28th anniversary and attended by 240 children. Of all days in the year it rained steadily from the time the children formed the procession until 9:00 pm, when the dance in the marquee ended. Alcohol and walking home in the dark were not encouraged.

In the '20s there was a banner and Union Jack flag procession to the church for a short service before returning to the Park. In 1927 it was however a fine day when it had been "A joy to meet practically all friends from the district and old friends from a distance. The meeting day of the year."

SCHEDULE AND PROGRAMME COVERS CHANGE DOWN THE AGES



Chiltern Ridges



By Cllr Patricia Birchley,
 Buckinghamshire Council

The new Buckinghamshire Council held its inaugural Annual General Meeting at Stoke Mandeville Olympic Stadium on Wednesday 26th May. 147 newly elected Members together with the Lord Lieutenant and Council officers were present. Cllr Jane MacBean was elected Chairman of HASC (Health and Adults Social Care Scrutiny Committee), and I became Chairman of the Children's and Education

Scrutiny Committee and the Chesham and Villages Community Board.

Topical at the moment is the weekend road closure of the A413 and we have worked hard to prevent rat-running through the parish and Hyde Heath. This is necessitated by HS2 installing utilities at the Little Missenden vent shaft site. Along with The Lee Parish Council, we fought strongly to reduce two weekend closures to one and to make sure there was plenty of advance warning.

Jane MacBean and I will continue to challenge HS2 working closely with parish representatives, and the council will hold the contractors to account within the Hybrid Bill.

The last meeting of the Village Forum was held on 24th June when we asked the parishes to bring forward items for discussion and funding. The Community Board will be talking about investment and regeneration in the Chilterns and Chesham on 7th July, and residents would be most welcome to attend online, or to suggest items they would like aired to the council.

The Leader of Buckinghamshire Council, Martin Tett, has set up a new Member task and finish group to look at better ways of maintaining our roads before the contract comes up for renewal in 2022.

HS2 update

By Cllr Colin Sully

(Lack of) progress reports

As I write this in the middle of June, just before the by-election, there is still no news of:

- HS2's appeal against Bucks Council's blocking of approvals for traffic on the A355/A413
- the review of trees to be 'saved' on Leather Lane (and Liberty Lane)

Quality Building & Renovation Projects

Based locally, PVE Construction are well known for providing high quality work throughout the Chilterns and surrounding areas.

We specialise in both residential and commercial projects offering a wide range of services from individual home improvements to complete new build management.

Call Phil Easeman on **07771 863880** or visit www.pveconstruction.co.uk



Professional Reliable Trusted



KINGSHILL CARS FOR ALL OCCASIONS



CHILTERN

AIRPORTS



LONDON



01494 868699

Email: bookings@kingshillcars.co.uk

- the final design of the Amersham ventilation shaft.

I have a sneaky feeling we will hear more about all of these issues soon after the by-election, indeed possibly before you read this article!

Chaos... or peace and quiet?

By the time you read this article, we will also have experienced the effects of the full weekend closure of the A413 at Little Missenden, to enable the construction of a cross-over on the dual carriageway at the ventilation shaft site.

A huge amount of discussion and debate took place between HS2 Ltd, Align (the main contractor), Bucks Council, parish councils and residents' groups to try to minimise the impact of this work on local communities. This was never going to be easy... hopefully everyone managed to get to wherever they were going.

Mervyn's Carpet & Upholstery Cleaning Services

Independent carpet cleaning specialist with over 30 years experience.

CARPETS. UPHOLSTERY.
RUGS. HARD FLOOR.
CARPET PROTECTION.
FULLY INSURED.

Friendly and reliable service.
Most work by recommendation.
Environmentally friendly
cleaning materials.

For a no obligation quote 'phone
01525 371724 or **07975 847027**
Email: mersu@btinternet.com

Wendover Dean Viaduct



Led by Wendover groups, but also including TLPC, concerns have been expressed to Bucks Council about the potential noise impacts of the design of this viaduct. Of particular concern is the fact that noise modelling is being used to justify a fixed viaduct design at a time when the track bed, the catenaries and the trains still have not been fully specified. How can anyone be sure about the noise impact, when so much is uncertain and what will be done if things don't turn out as the modelling predicts, given that the viaduct once built will be difficult to change?

Buckinghamshire Council has now been advised by HS2 that that there is sufficient time to submit a revised application for the design of the parapet, if the projected noise levels increase once the track and train noise is better understood. HS2 has also set out the other types of additional mitigation that would be possible if needed, including slowing down the trains.

EKFB do not plan to commence the procurement of the noise barriers for the viaduct until early in 2024 and say, "There is sufficient time for new information from the track and rolling

stock suppliers to be considered... and for approval to any variation to noise barrier heights that might be required to be sought.”

Bucks Council say “We are not able to refuse this application on noise grounds. On the basis of the written confirmations we have received, the Council has approved the application. Consenting to the design of the viaduct at this stage does not, in any way, prejudice the council’s decision-making at the ‘bringing into use stage’.”

So only another three years to wait on this one!

Footpath closures

There are only two routes running from the local area down onto the A413 that will remain open throughout the construction period:

- GMI/2 which runs from Potter Row down to Gt Missenden
- TLE/3 and WEN/37 which run from the top of Bowood Lane through Durham Farm.

The local contractor (EKFB) and the Chiltern Society have been working together to ensure that correct and appropriate signage and notices are put in place, including on the Chiltern Way. Some short-term diversions to these two routes will take place.

Full details are available at www.hs2watch.com/Footpaths.html

HS2 engagement

TLPC councillors continue to meet the HS2 Community Engagement Managers on a fortnightly basis.

If you have any local HS2 queries for the Parish Council, please send them to HS2@thelee.org.uk.

If you have questions or complaints for HS2 Ltd or their contractors, please submit them at www.hs2.org.uk/in-your-area

J Brown Funeral Services

67 Woodside Road, Amersham, HP6 6AA
01494 727474 (24 hours)

A truly independent family funeral directors

Bespoke and traditional services
Private chapels of rest
Pre-paid funeral plans
Off street client parking
Home visits



Contact Jason Brown on: 01494 727474
jason@jbrownfuneralservices.co.uk



Recommended by
The Good Funeral Guide



Great Missenden Supported Living

A warm, friendly, house for the elderly, in the picturesque centre of the village.

Come and take a look to see for yourself and have a chat with Carol Lauder-Ross (Manager)

Tel: 01494 865026

or email for a brochure

info@abbeyfieldgreatmissenden.co.uk

Find out more on our website

www.abbeyfield.com

Dear Diary

The fastest way to let everyone in the parish know about an event you are arranging is to publish it right here in the Newsletter. Contact the Editor by the 12th of the previous month (see contact details on page 1).

July

Thursday 1st. Village Walk. Meet on The Lee green at 9:30 am.

Thursday 1st. The Arts Society Ballinger. Online via Zoom. Basingstoke and its Contribution to World Culture by Rupert Willoughby. Guests welcome. Email ballinger@theartssociety.org for details.

Wednesday 7th. The Arts Society Ballinger. Tea and cakes. Ballinger Village Hall. 4:00 pm to 5:30 pm. Limited numbers (30) email ballinger@theartssociety.org to book. Non-members wanting to learn more about the society are welcome.

Sunday 11th. St Marys Church Ballinger. 2:30 pm to 5:00 pm. Garden Party

Tuesday 13th. Ballinger WI. 3:00 pm. Tea party at Pam Hearn's weather permitting. WI ladies please check your June bulletin for information.

Wednesday 14th. The Arts Society Ballinger. Tea and cakes. Ballinger Village Hall. 4:00 pm to 5:30 pm. Limited numbers (30) email ballinger@theartssociety.org to book. Non-members wanting to learn more about the society are welcome.

Thursday 15th. The Arts Society Ballinger. Online via Zoom. Australian Art by Val Woodgate. Guests welcome. Email ballinger@theartssociety.org for details.

Friday 16th. St Marys Church Ballinger. 10:30 am to 12:30 pm. Coffee Morning.

Thursday 22nd. The Arts Society Ballinger. Tea and cakes. Ballinger Village Hall. 4:00 pm to 5:30 pm. Limited numbers

(30) email ballinger@theartssociety.org to book. Non-members wanting to learn more about the society are welcome.

Thursday 22nd. The Lee Parish Council Meeting. 7:30 pm at the Parish Hall

Thursday 29th. The Arts Society Ballinger. Tea and cakes. Ballinger Village Hall. 7:30 pm to 9:00 pm. Limited numbers (30) email ballinger@theartssociety.org to book. Non-members wanting to learn more about the society are welcome.

Friday 30th. St Marys Church Ballinger. 10:30 am to 12:30 pm. Coffee Morning

Coming soon

Thursday 5th August. Village Walk. Meet on The Lee green at 9:30 am.

BATS – Ballinger babies and toddler group will resume again in September. Watch this space.

Thursday 2nd September. Village Walk. Meet on The Lee green at 9:30 am.

Thursday 2nd September. Ballinger Horticultural Society. Autumn Show

Tuesday 14th September. The Lee Parish Council Meeting. 7:30 pm. Parish Hall.

Directory of local contacts

Ballinger Horticultural Society

Chairperson: Katherine Hersee
07801 948650, kjhersee@gmail.com

Membership Secretary:
jennywooding@btconnect.com

Ballinger War Memorial Hall

Bookings: Jane Ogden, 837379

Ballinger Evening WI

Contact: Jo Laurie, 863492
watercolours@kitty4.co.uk

Lee Common C of E School

School office, 837267
office@leecommon.bucks.sch.uk

Lee Common Methodist Church

Graham and Susan Evans, 580016

Lee Common Scouts**Group Scout Leader**, Chris Nevill. 864881

gsl@1stleecommon.co.uk

Scouts, Enzo D'Alessandro; scouts@1stleecommon.co.uk**Beavers**, Karen Bruton; beavers@1stleecommon.co.uk**Cubs**, James Bruton;

cubs@1stleecommon.co.uk

Shop at The Lee

Symeon Economou, 837195

shop@thelee.org.uk

St John the Baptist Church

See centre pages

St Mary's Ballinger

Contact: Anne Ellis, 837247

anne.ellis1004@gmail.com

Tennis Court @ Parish Hall

Bookings: Pippa Hart 07785 323232

(ideally WhatsApp)

The Arts Society Ballinger

Chair: Lesley Wickham, 865480

ballinger@theartsociety.org

The Lee Cricket Club

www.theleecc.org.uk

Secretary: Mike Harris

07788 345555

The Lee Flower Show

Chairman: Jonathan Batten, 837450

The Lee Newsletter

theleenewsletter@gmail.com

The Lee Old Church Trust

Secretary: Pam Garner 837501

The Lee Parish Council

Clerk: Hayley Farrelly, 07704 909324

clerk@thelee.org.uk

www.thelee.org.uk/pc

Allotments: Alison Weir, 837529

The Lee Parish Hall Committee

Bookings: Anne Barnett, 837796

Pippa Hart, 837340

Chairman: Tony Lea, 837237

The LeeWay

Contact: 07845 029500

The Newsletter

The Lee Newsletter is published 10 times a year and distributed free to all households in the parish... and a little beyond. The views expressed in it are not necessarily those of the Editor.

We welcome letters and articles of interest and relevance to The Lee. Copy should be sent to the Editor of the month (see page 1) by the 12th of the month before publication.

Letters should ideally run to no more than 200 words and articles to no more than 700 words; material may be edited and may appear on the village website www.thelee.org.uk unless consent is specifically withheld. Anonymous contributions are not accepted.

To advertise or place an insert, please contact Paul Apicella on 837377 by the 12th of the previous month.

If you have photographs for publication please contact Jonathan Batten on 837450 or email battenjonathan@hotmail.com.

For queries regarding distribution contact Colin Sully on 837760.

Other members of the Editorial team: Zoe Berkeley, Ruth Fowler, Mary Godfrey, Phil Harrison, Liz Macann, Jen Ogle and Adam Speller.

Printed by Orbit Press: Chesham. 01494 778053.

To book the Parish Hall or Scout Hut

'phone Anne Barnett on 837796

Rates	9 am - 1 pm 2 pm - 6 pm	6 pm - midnight
Mon - Fri	£30 or £10/hr	£45 or £10/hr
Sat/Sun	£12/hr	£70
Bank Holiday	£12/hr	£70
Car park only	£10	
Crockery/cutlery	£15 (hire outside the hall)	



Sales & Lettings

64 High Street Great Missenden

Buckinghamshire HP16 0AN

Tel: 01494 890990

email: info@jeremyswan.co.uk

www.jeremyswan.co.uk